

Object name dress

Date 1780-1800

Inventory number T3/585AB/J182



Persistent identifier (object): <http://data.momu.be/ark:34546/mk0p5z>

Persistent identifier (pattern): <http://data.momu.be/ark:34546/m1vhxh>

Credits: CC BY

Stijn Van den Bulck

MoMu

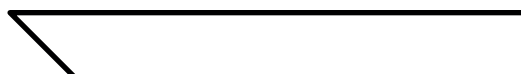
- all patterns are without seam allowances
- for referential images please check the website via the QR code
- always print at 100% scale and use test square to verify

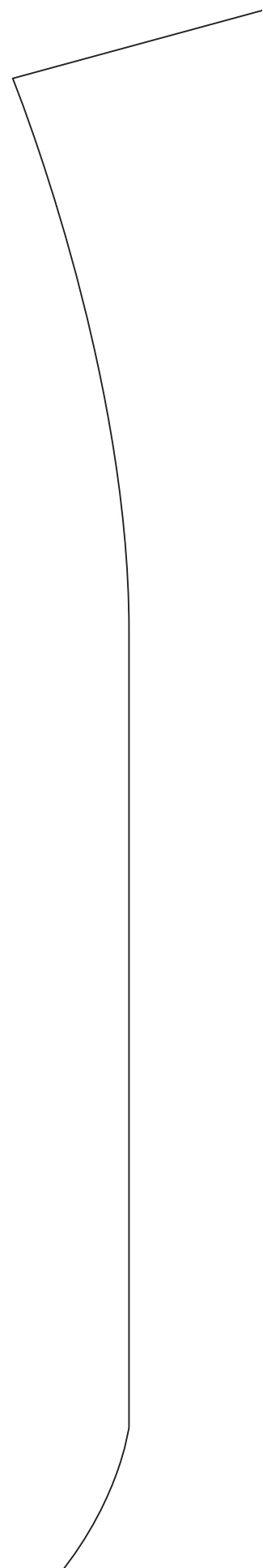
test square
10 x 10 cm

test square
3 x 3 inch

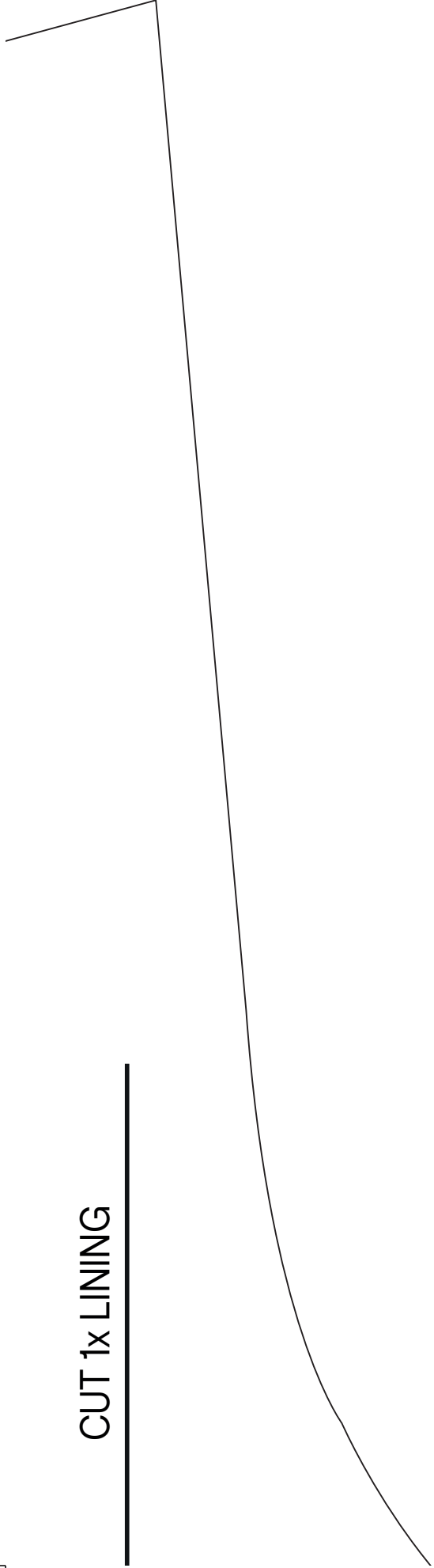
Legend:

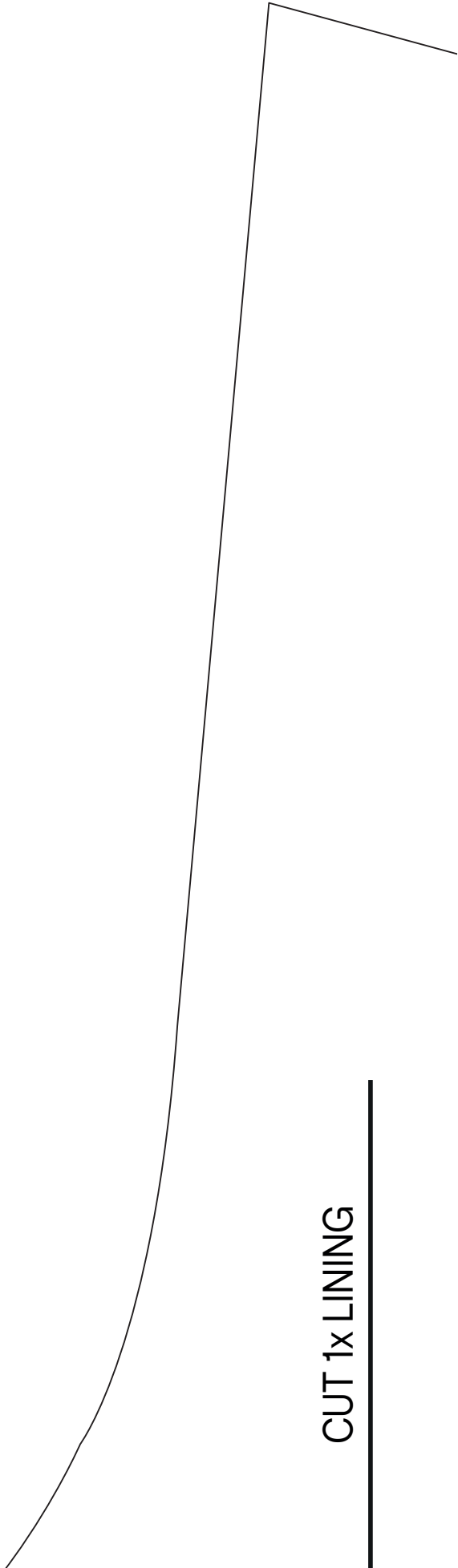
grainline





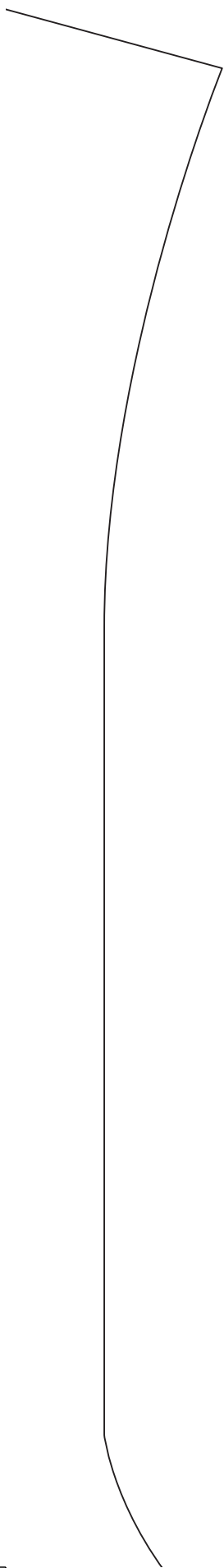
CUT 1x LINING





CUT 1x LINING

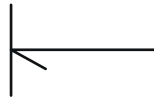




notch



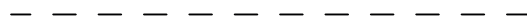
pleat + direction



button / hook and eye



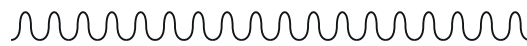
topstitching / embellishment



fold line

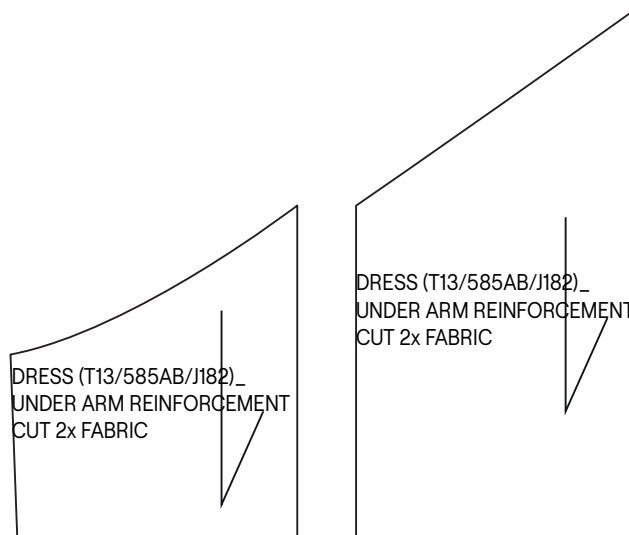


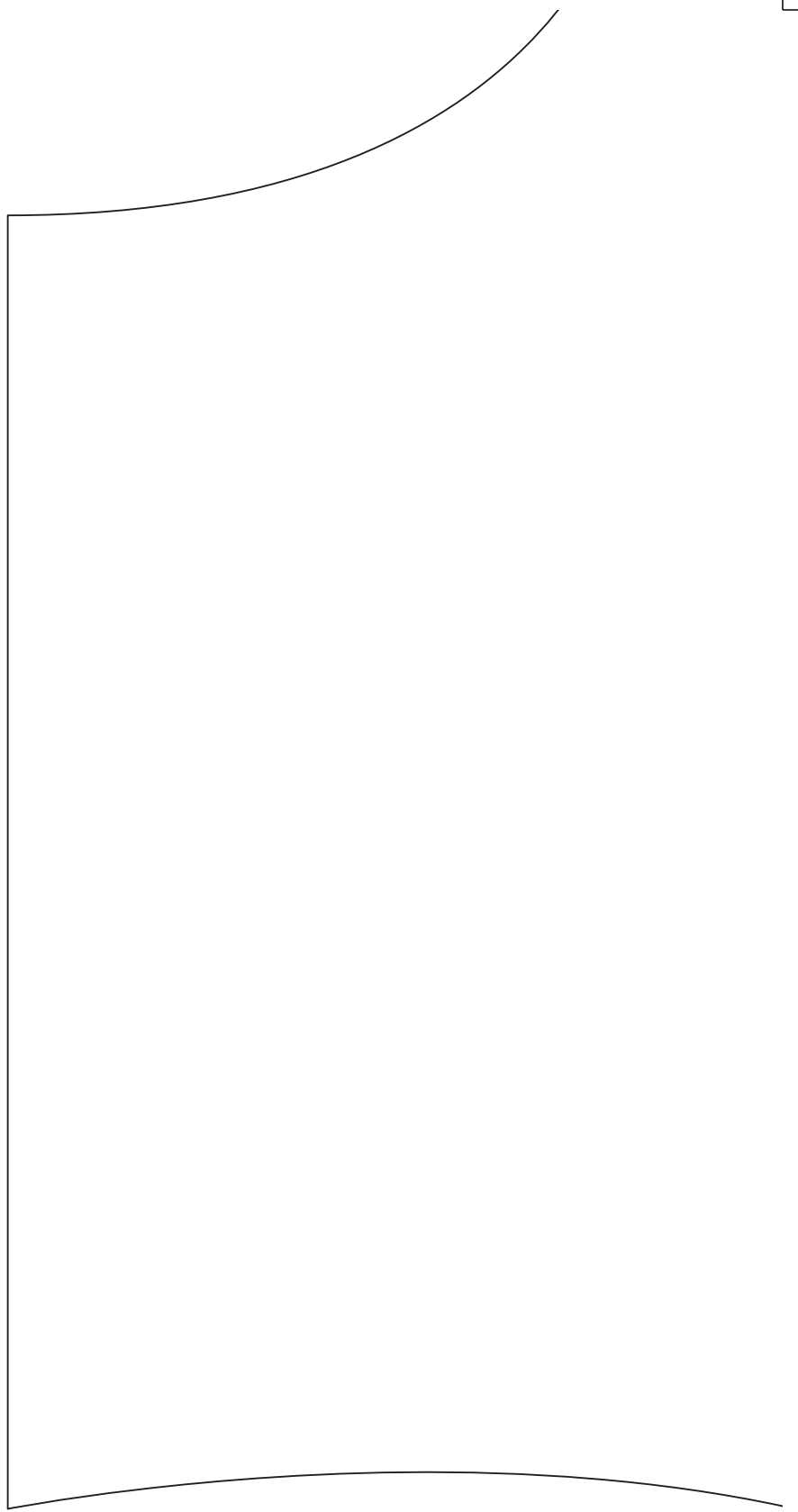
gathering



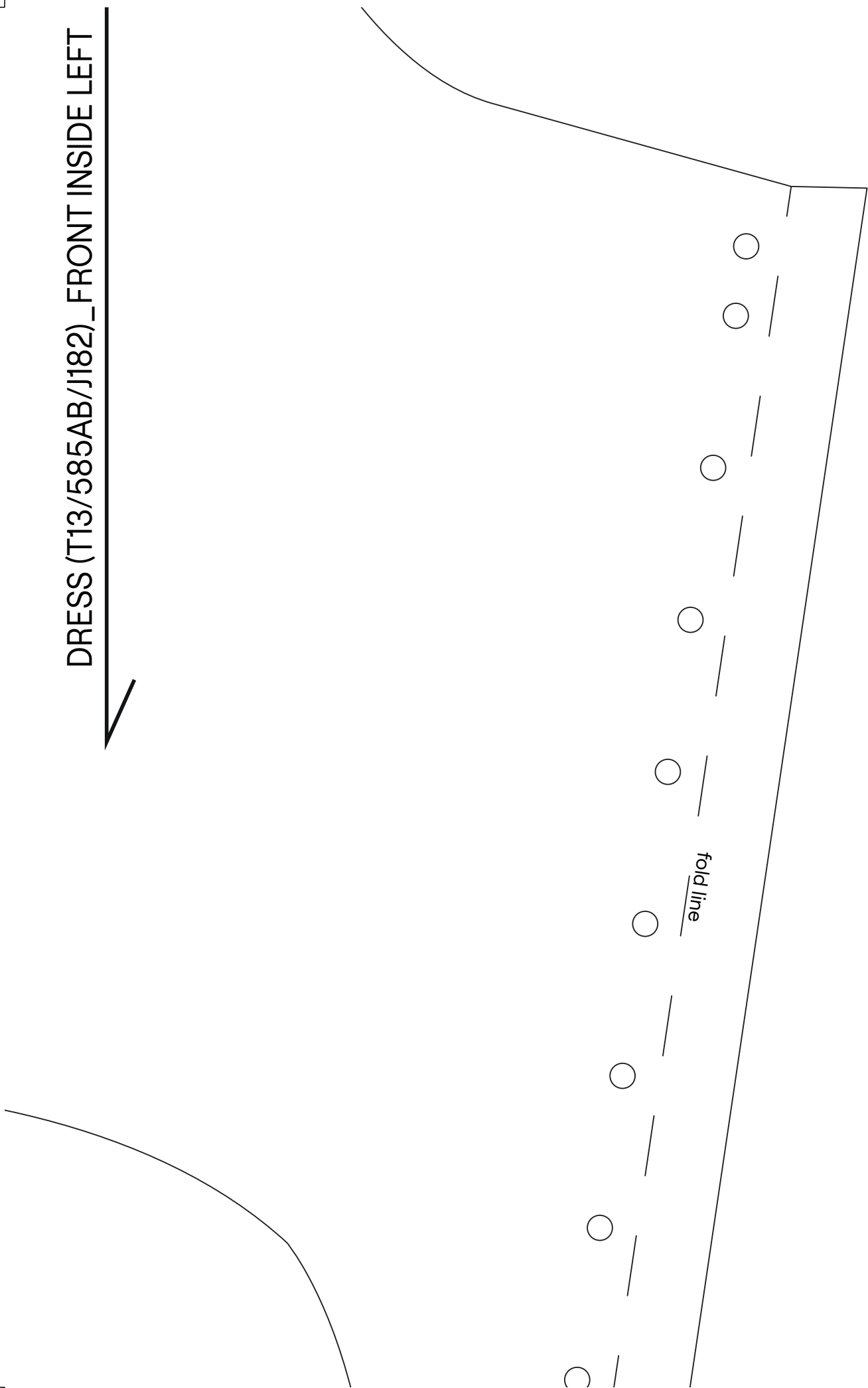
Measurements:

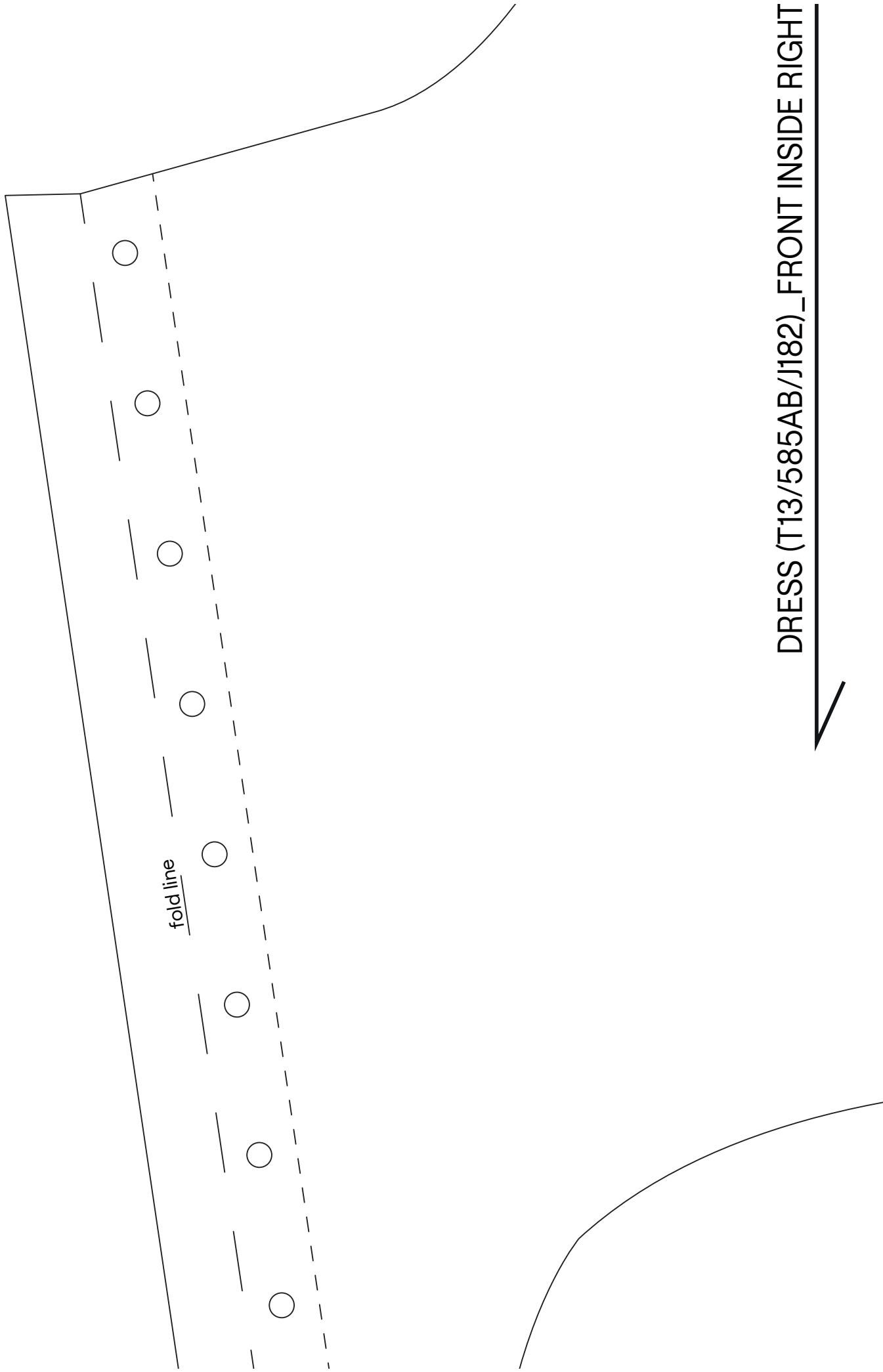
front length	138 cm
back length	155,7 cm
sleeve length	29 cm
chest (circumference)	89,5 cm
waist (circumference)	73 cm





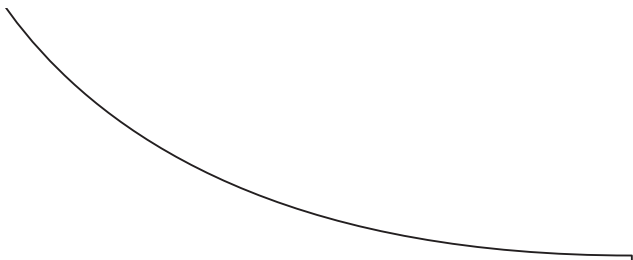
DRESS (T13/585AB/J182)_FRONT INSIDE LEFT





DRESS (T13/585AB/J182)_FRONT INSIDE RIGHT







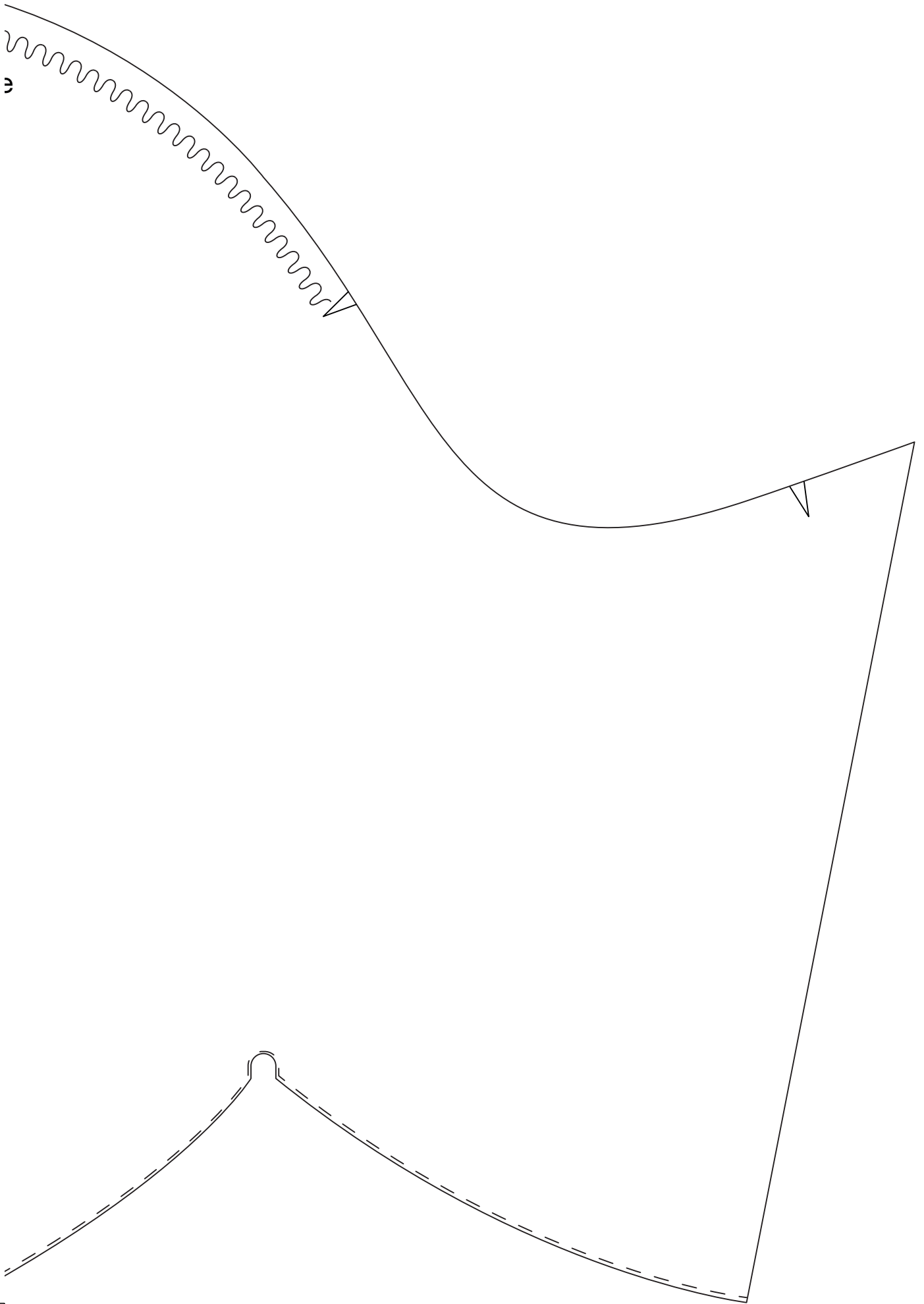
ease in to shoulder piece

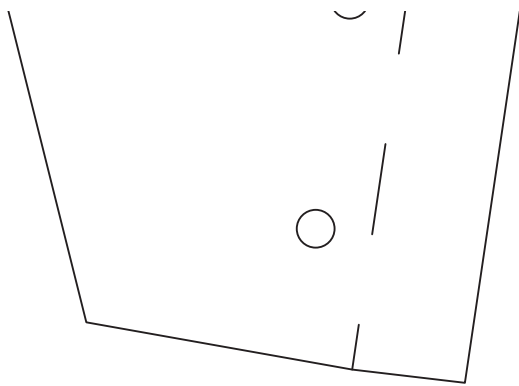
DRESS (T13/585AB/J182)_SLEEVE

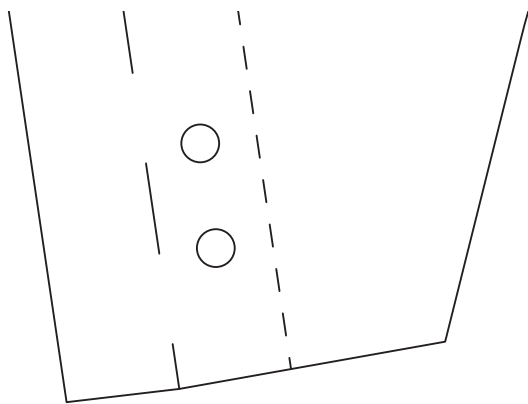
CUT 2x FABRIC

CUT 2x LINING

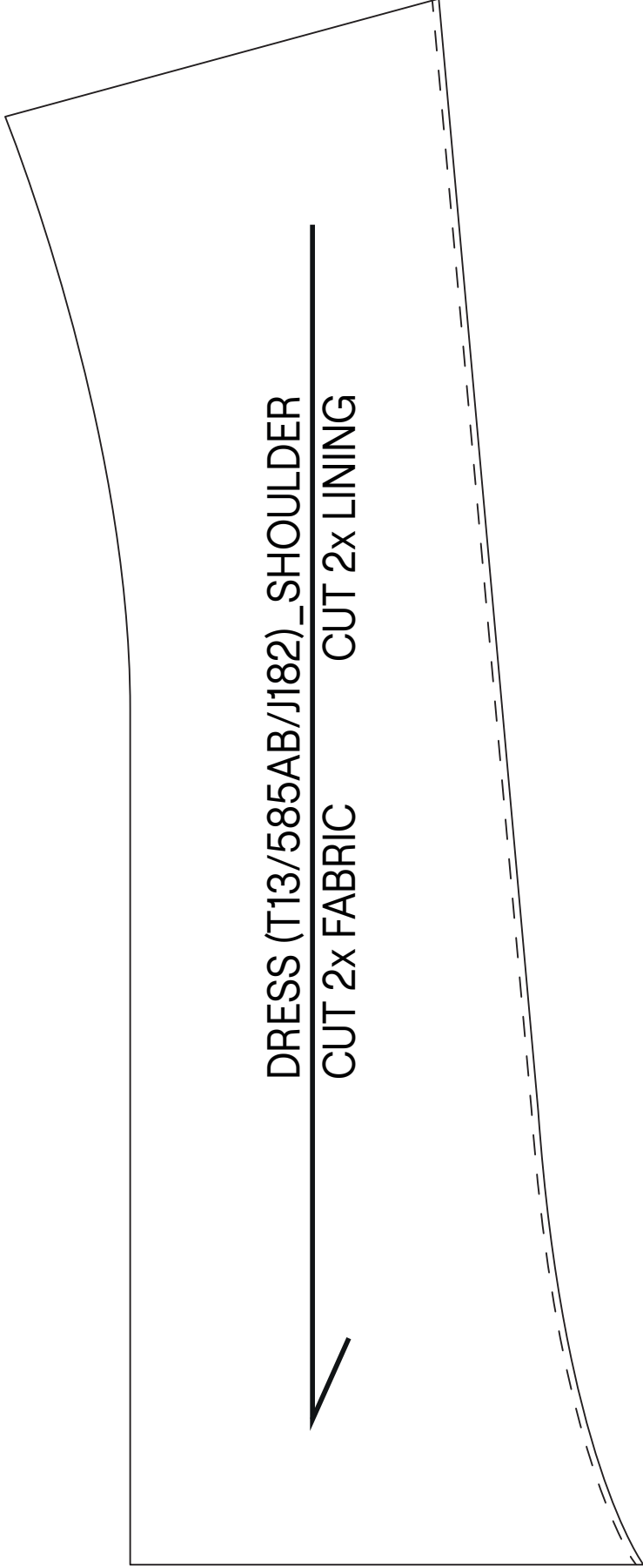




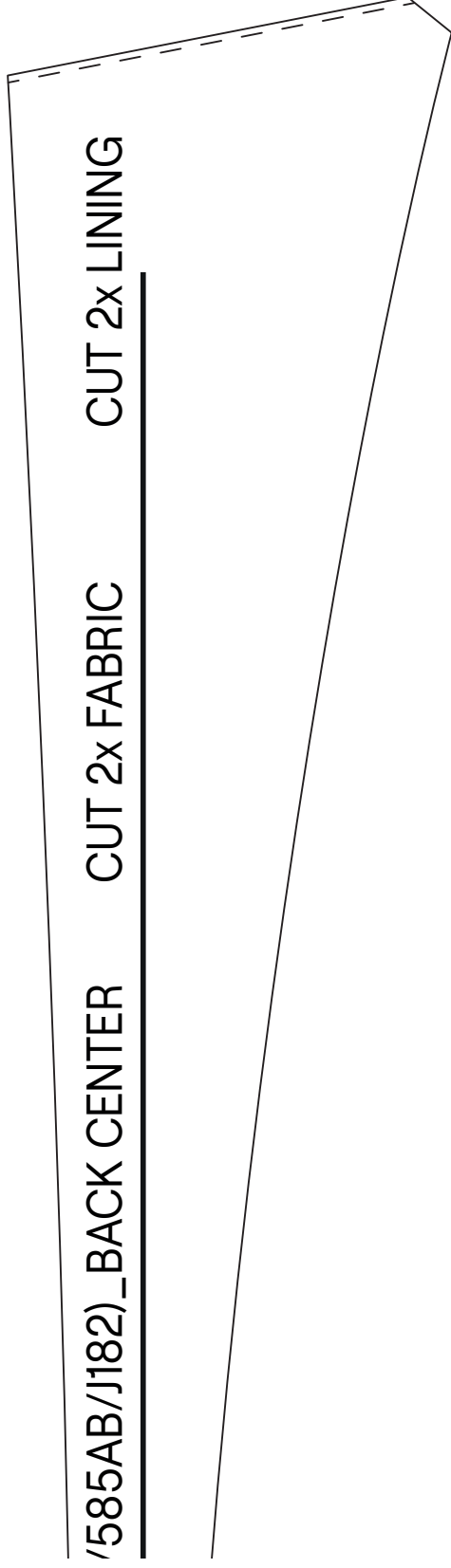
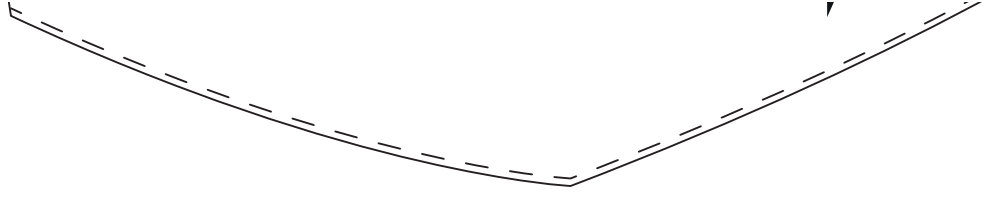




DRESS (T13/585AB/J182)_SHOULDER
CUT 2x FABRIC CUT 2x LINING



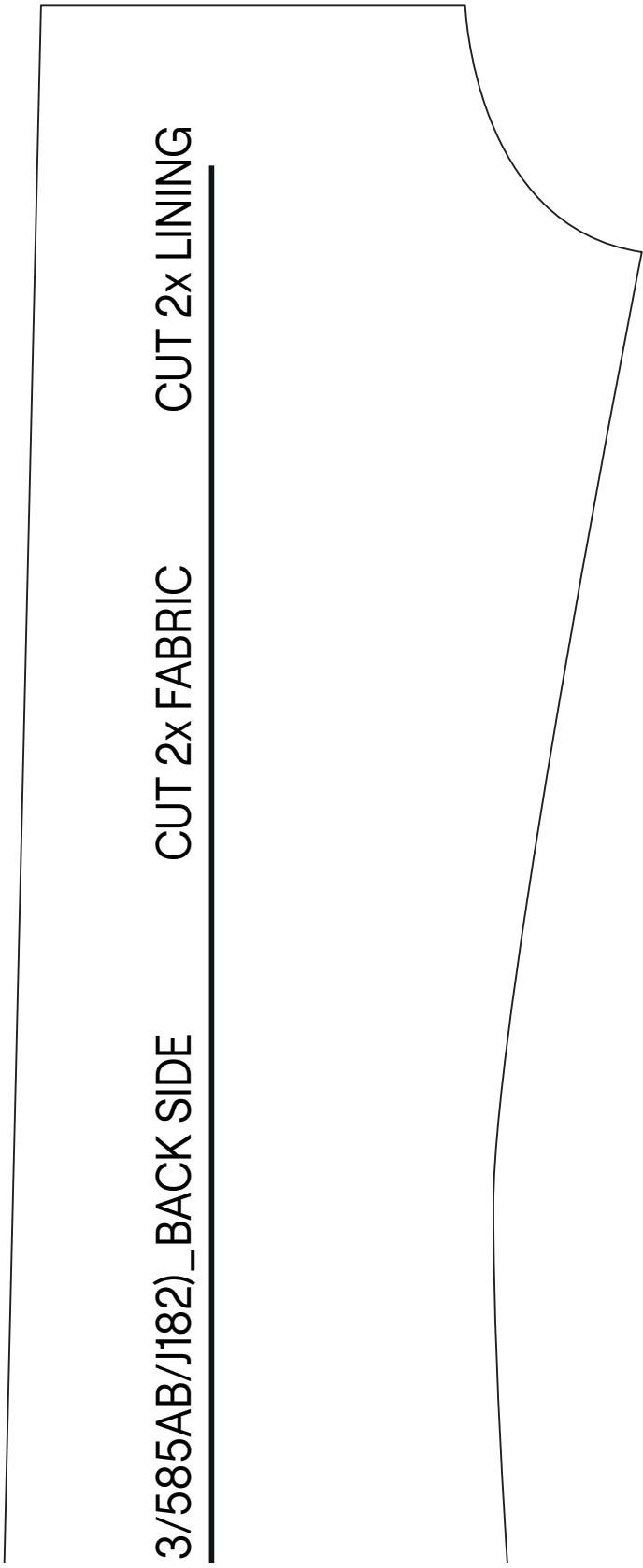
/585AB/J182)_BACK CENTER CUT 2x FABRIC CUT 2x LINING



3/585AB/J182)_BACK SIDE

CUT 2x FABRIC

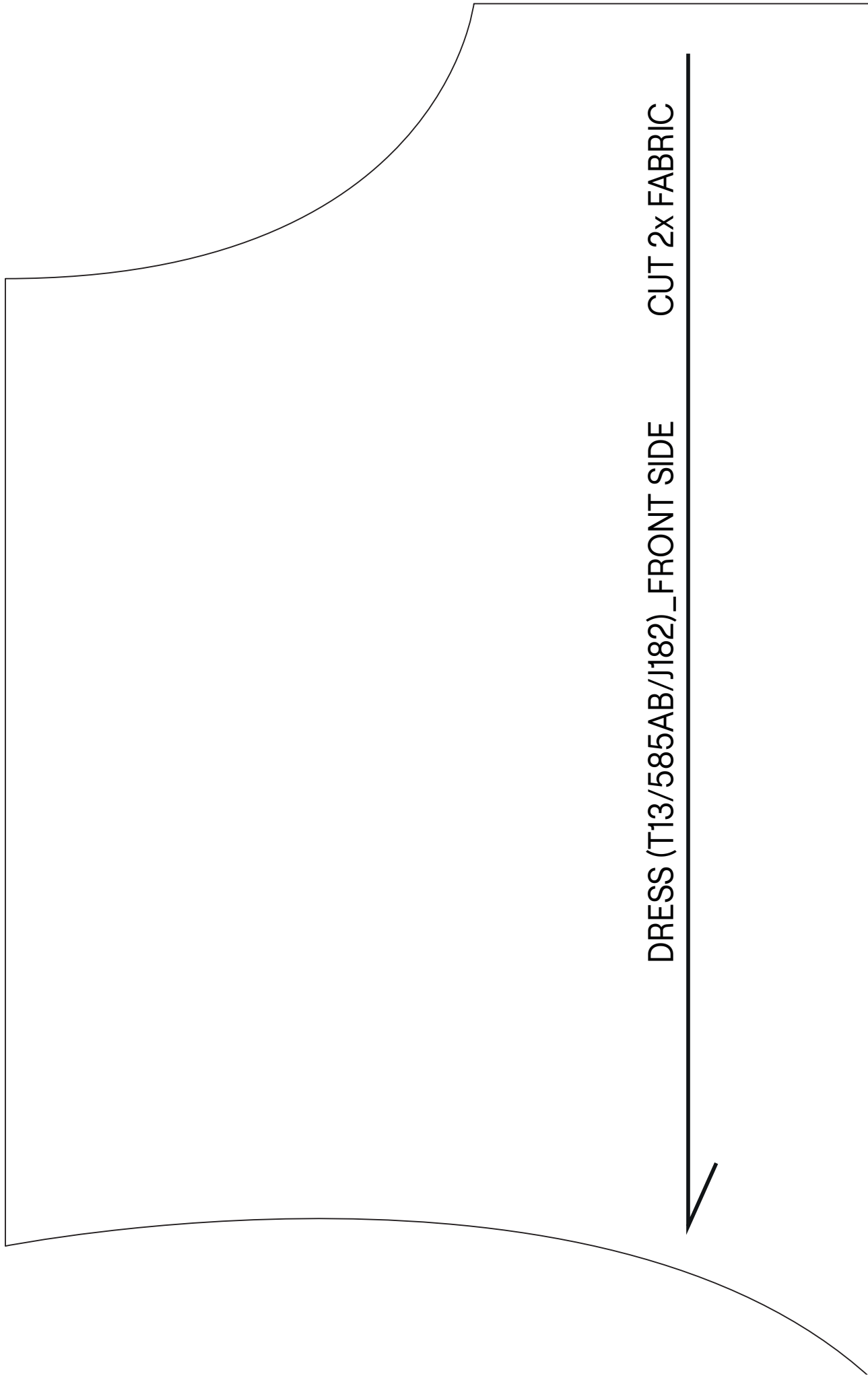
CUT 2x LINING



← DRESS (T13/585AB/J182)_SIDE

CUT 2x FABRIC

CUT 2x LINING



DRESS (T13/585AB/J182)_FRONT SIDE CUT 2x FABRIC



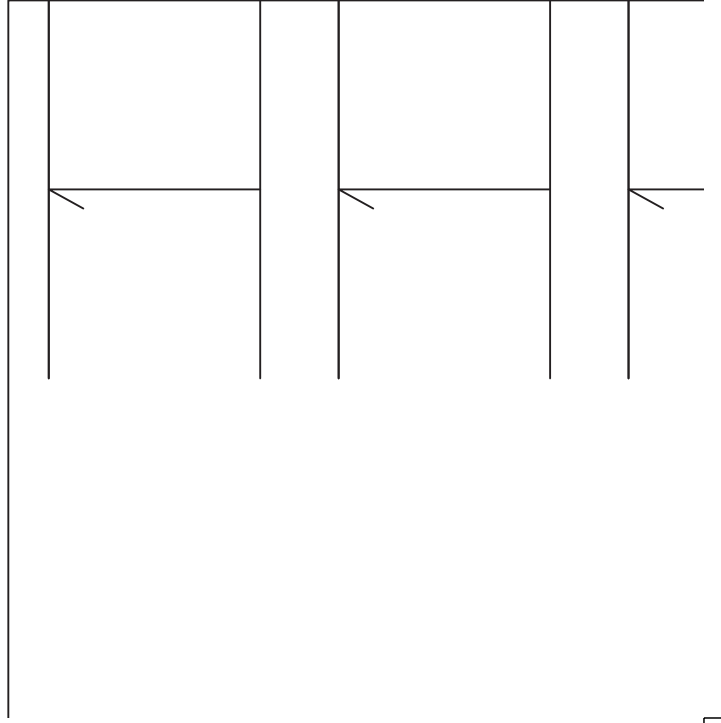
DRESS (T13/585AB/J182)_FRONT CENTER CUT 2x FABRIC

left bodice has extra panel here

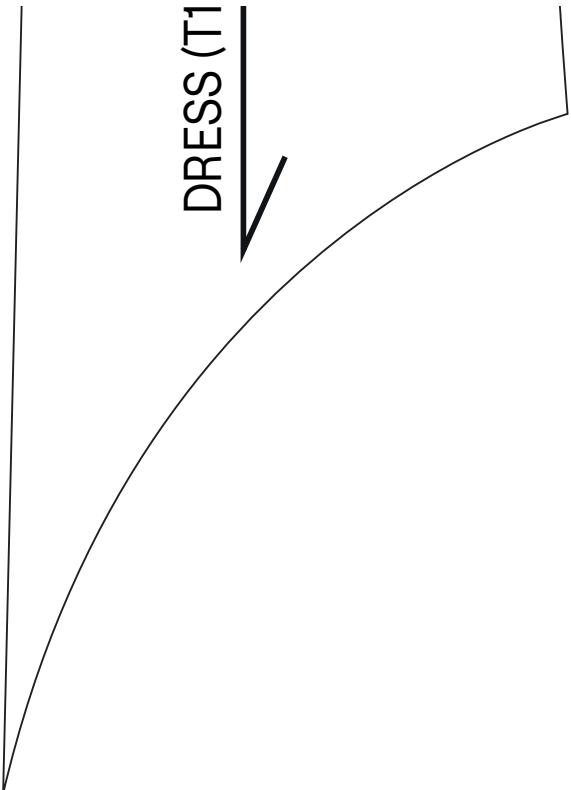
bodice has extra seam here
(probably due to fabric
consumption)

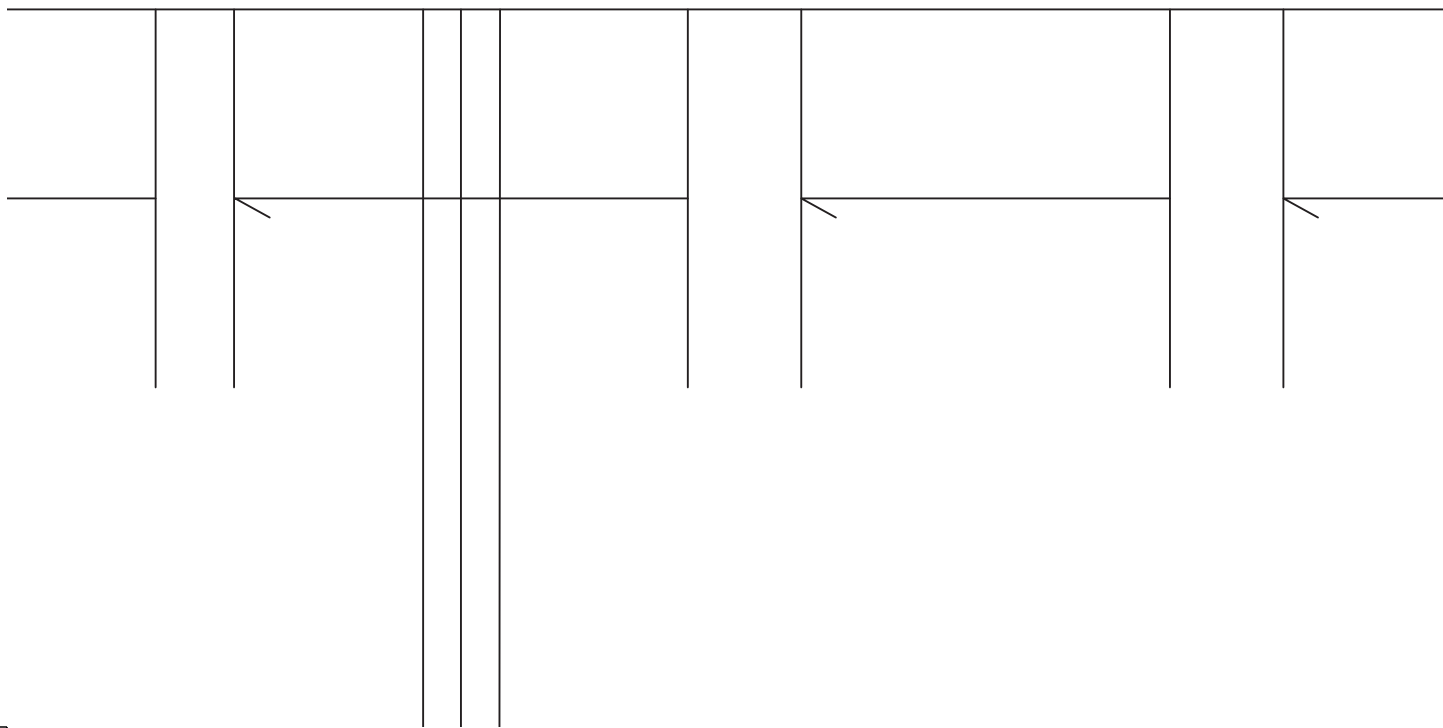
'585AB/J182)_FRONT FACING CUT 2x FABRIC

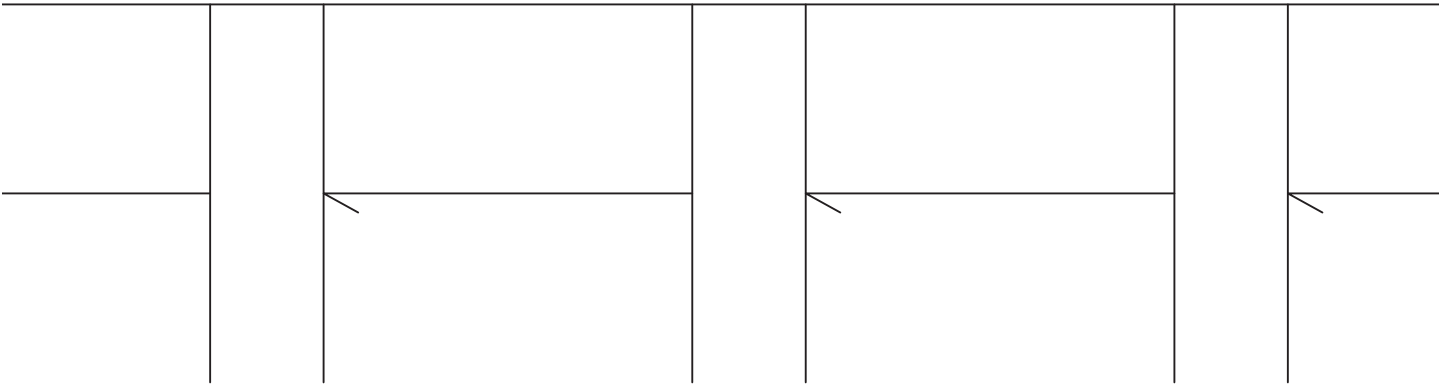
DRESS (T13)

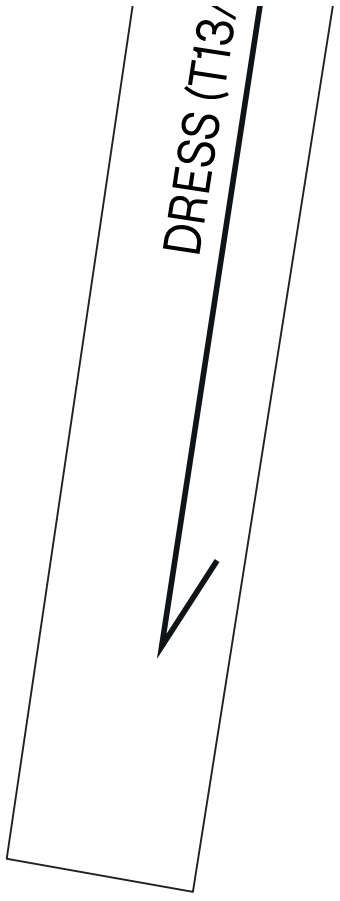
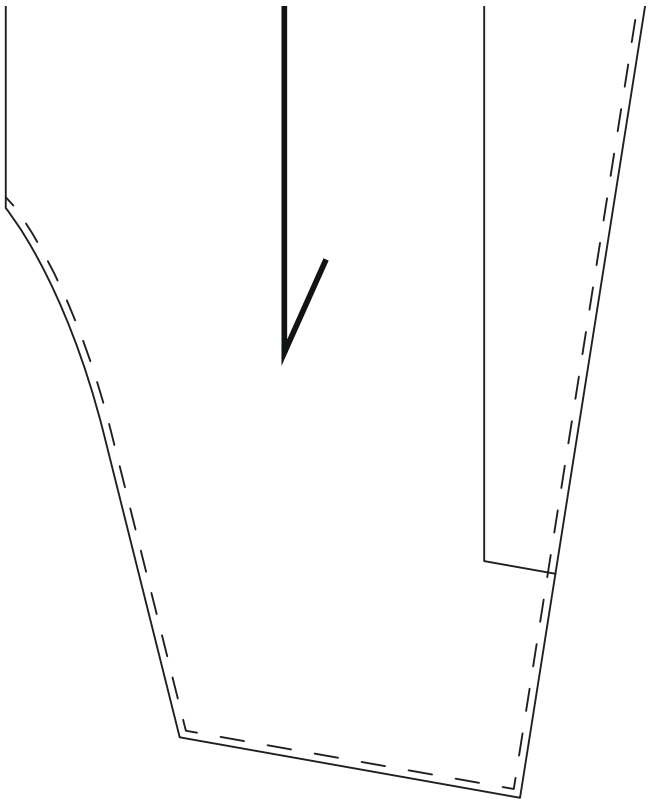
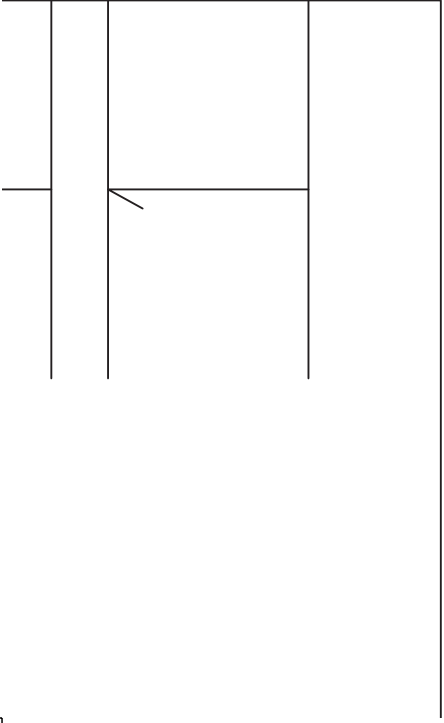


DRESS (T1)









(cut on selvedge and use 1cm seam allowance)





cut for pocket opening
+
attach to lining as finish









attach ribbon
for pull up-system
(length 21cm)



FRONT

CUT 2x FABRIC

CUT 2x LINING



C.Front (cut on selvedge and use 1cm seam allowance)



attach ribbon in loop
for pull up-system
(length loop 11cm)

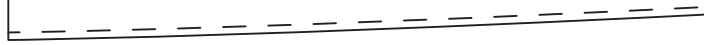


DRESS (T13/585AB/J182)_SKIRT F

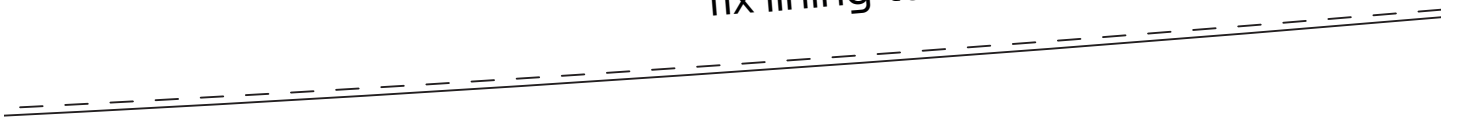
di
ar
ap

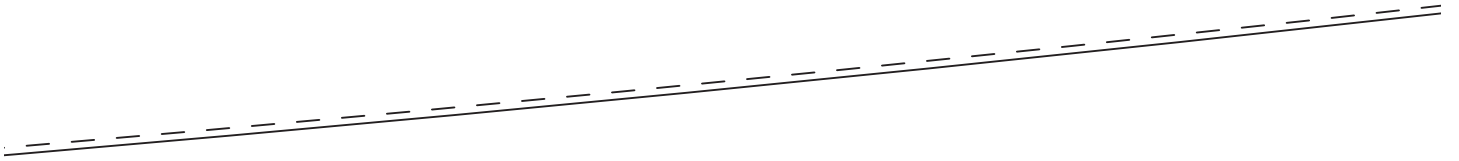
divide into three equal widths
and tack outer fabric to lining
approximately every 10cm

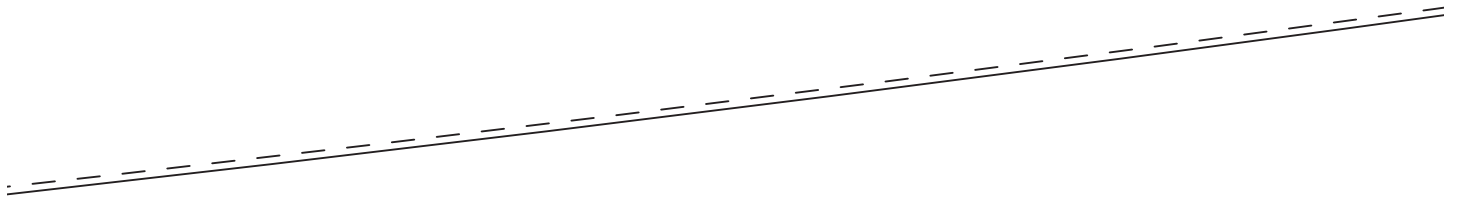


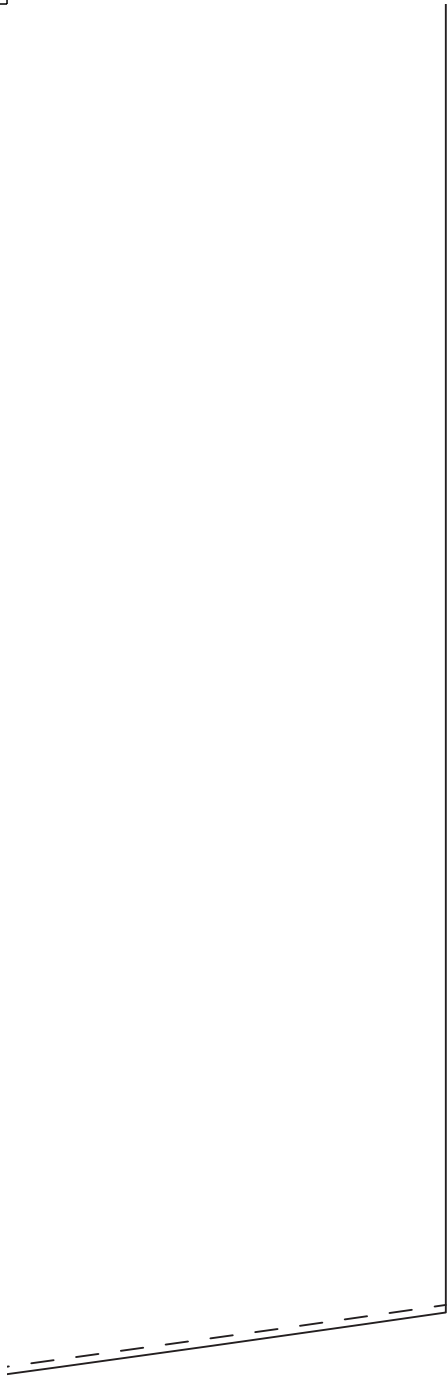


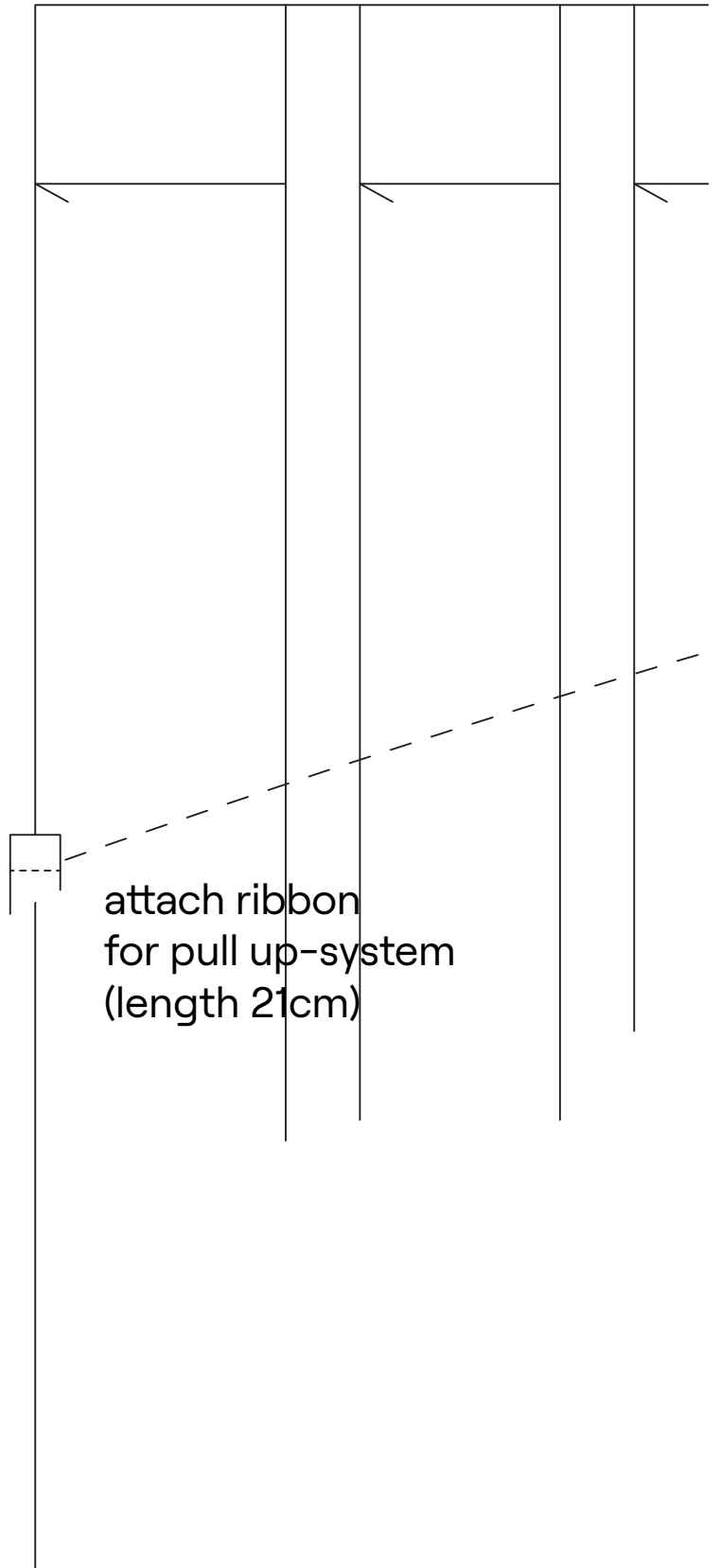
fix lining to outer and finish hem

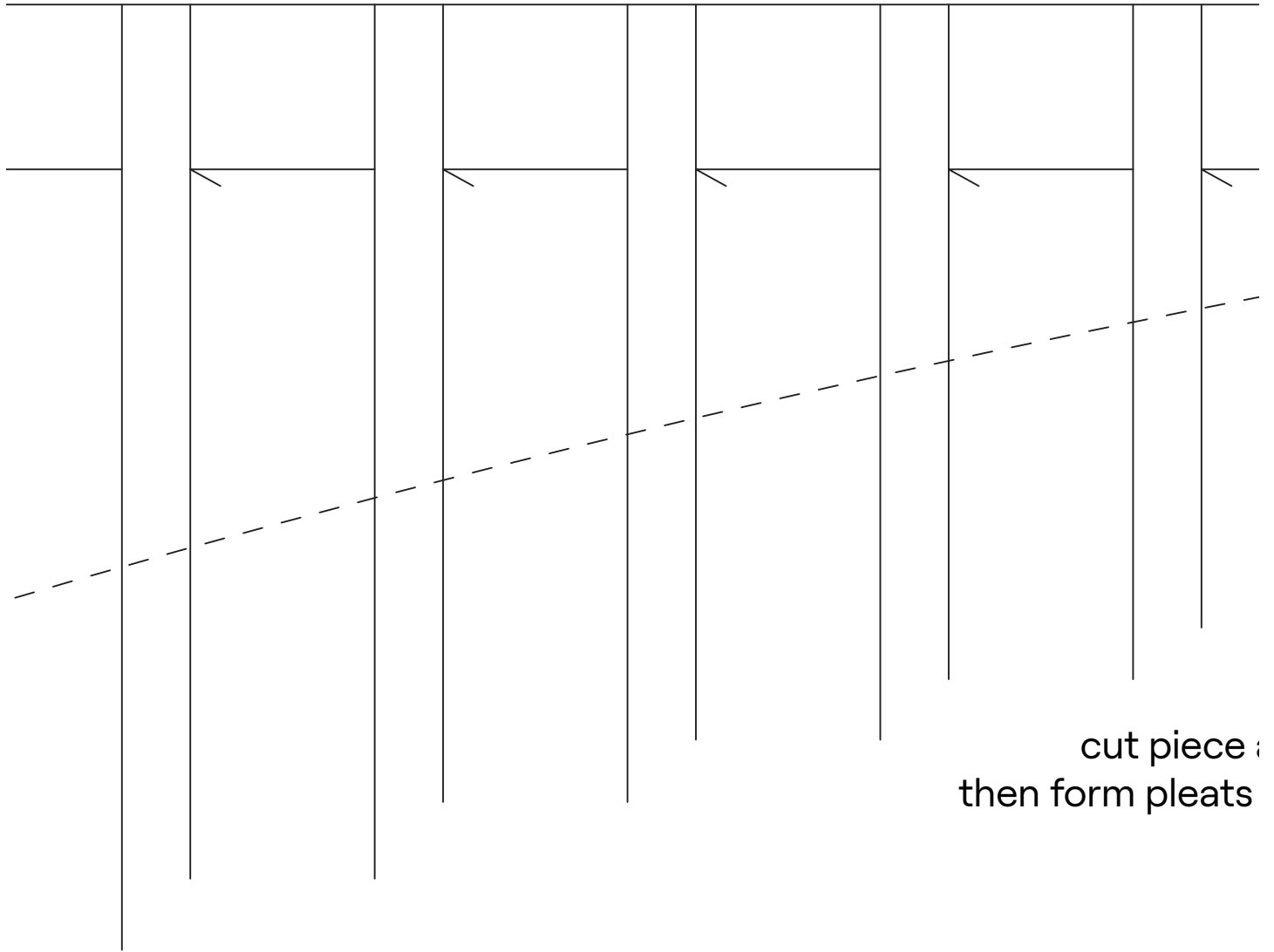




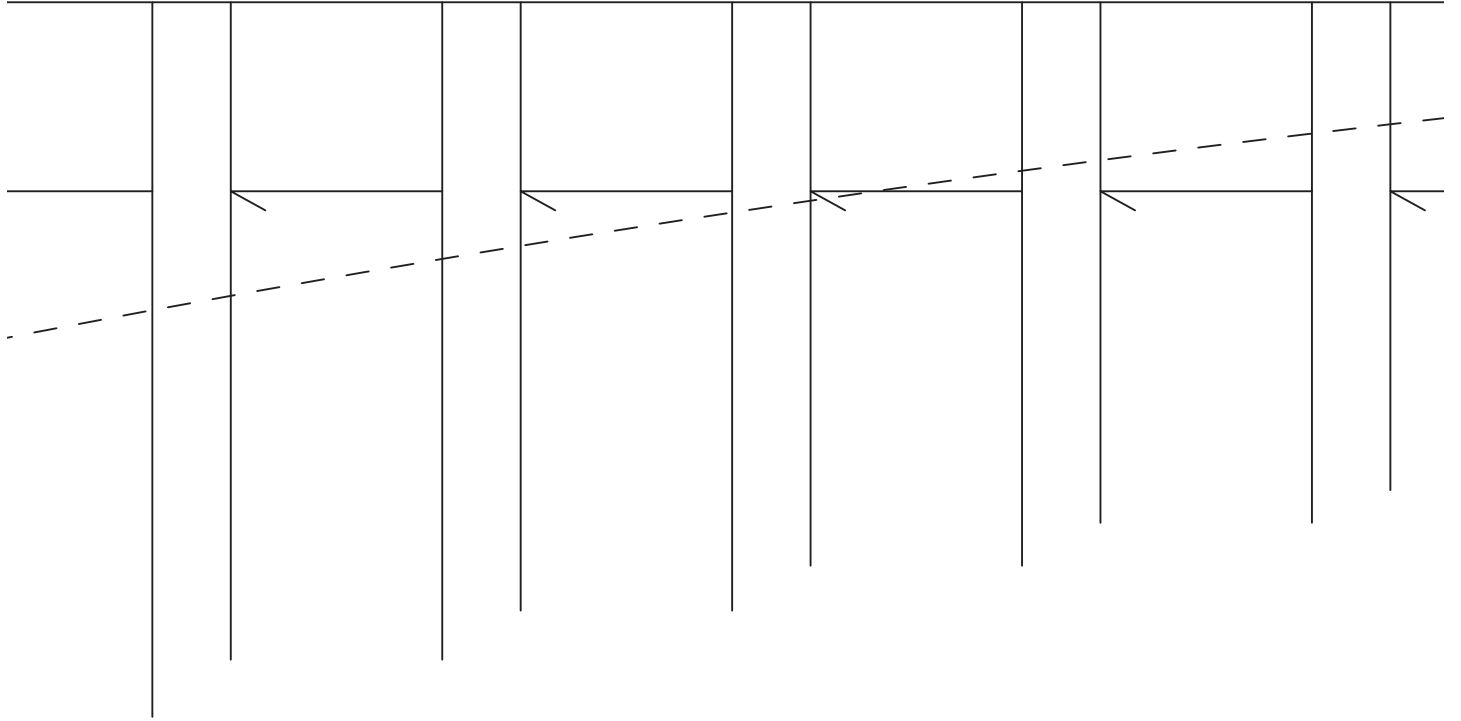




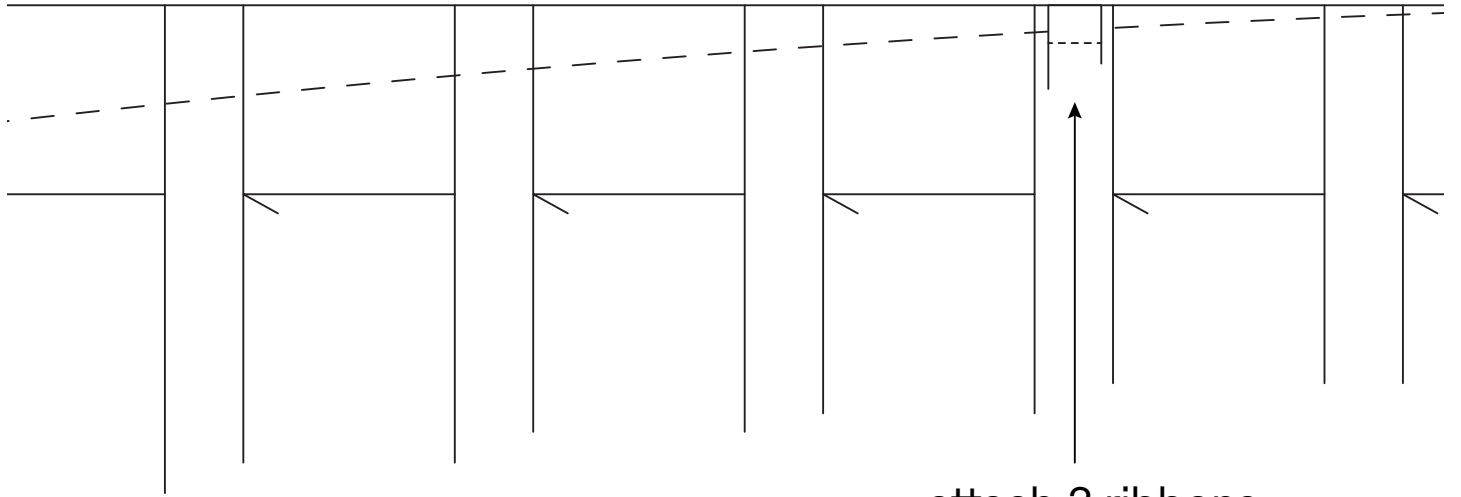




cut piece :
then form pleats



according to outline first
and fix to bodice on dotted line



attach 3 ribbons
for pull up-system
(lengths 32, 55 and 55cm)






CUT 2x LINING



(cut on selvedge and use 1cm seam allowance)



attach ribbon in loop
for pull up-system
(length loop 11cm)

C.Back

(cut on selve



DRESS (T13/585AB/J182)_SKIRT BACK CUT 2x FABRIC



attach ribbon
for pull up-system
(length 21cm)



edge and use 1cm seam allowance)

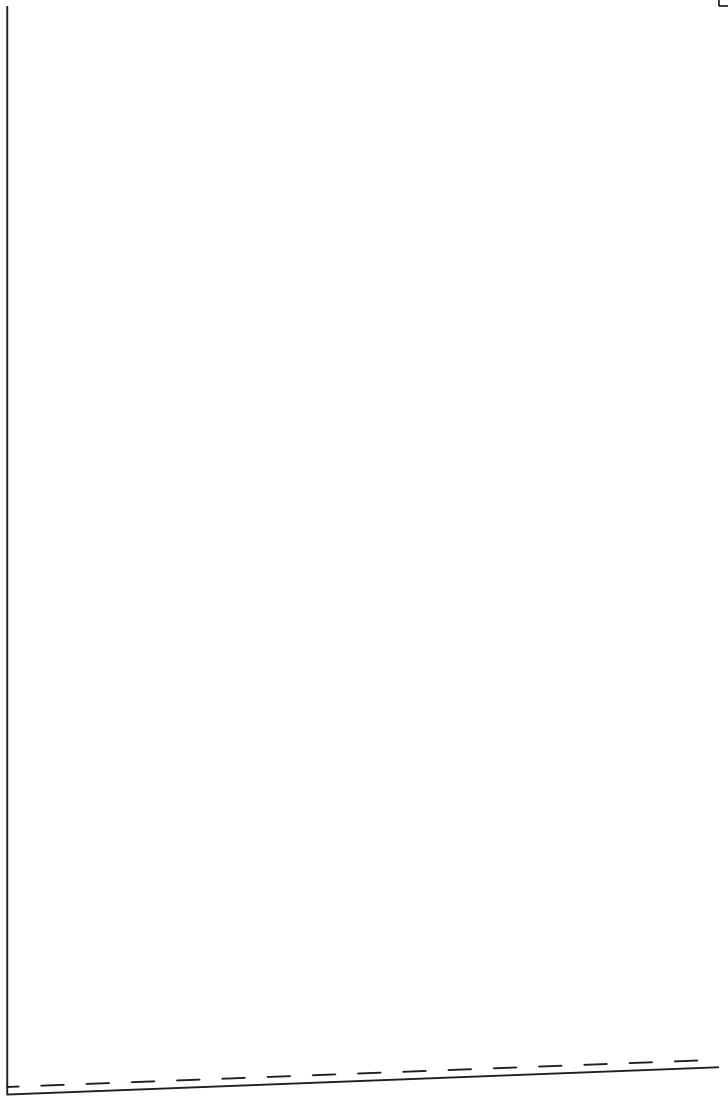
divide into three equal widths
and tack outer fabric to lining
approximately every 10cm

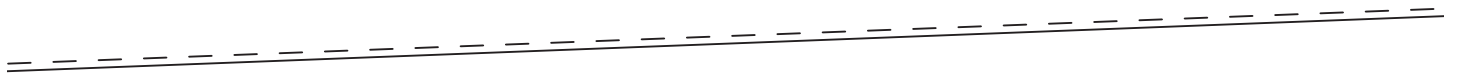




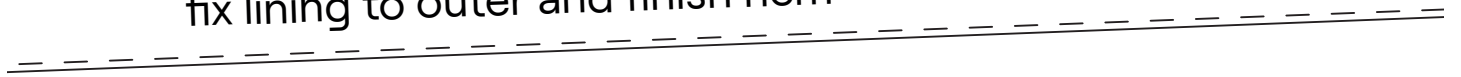
attach ribbon in loop
for pull up-system
(length loop 11cm)







fix lining to outer and finish hem



.....

