

Object name stay

Date 1770-1790

Inventory number T12/123/O11



Persistent identifier (object): <http://data.momu.be/ark:34546/md2574>

Persistent identifier (pattern): <http://data.momu.be/ark:34546/mf1vxp>

Credits: CC BY

Stijn Van den Bulck

MoMu



With the support of the
Flemish Government

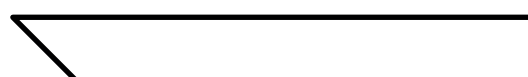
- all patterns are without seam allowances
- for referential images please check the website via the QR code
- always print at 100% scale and use test square to verify

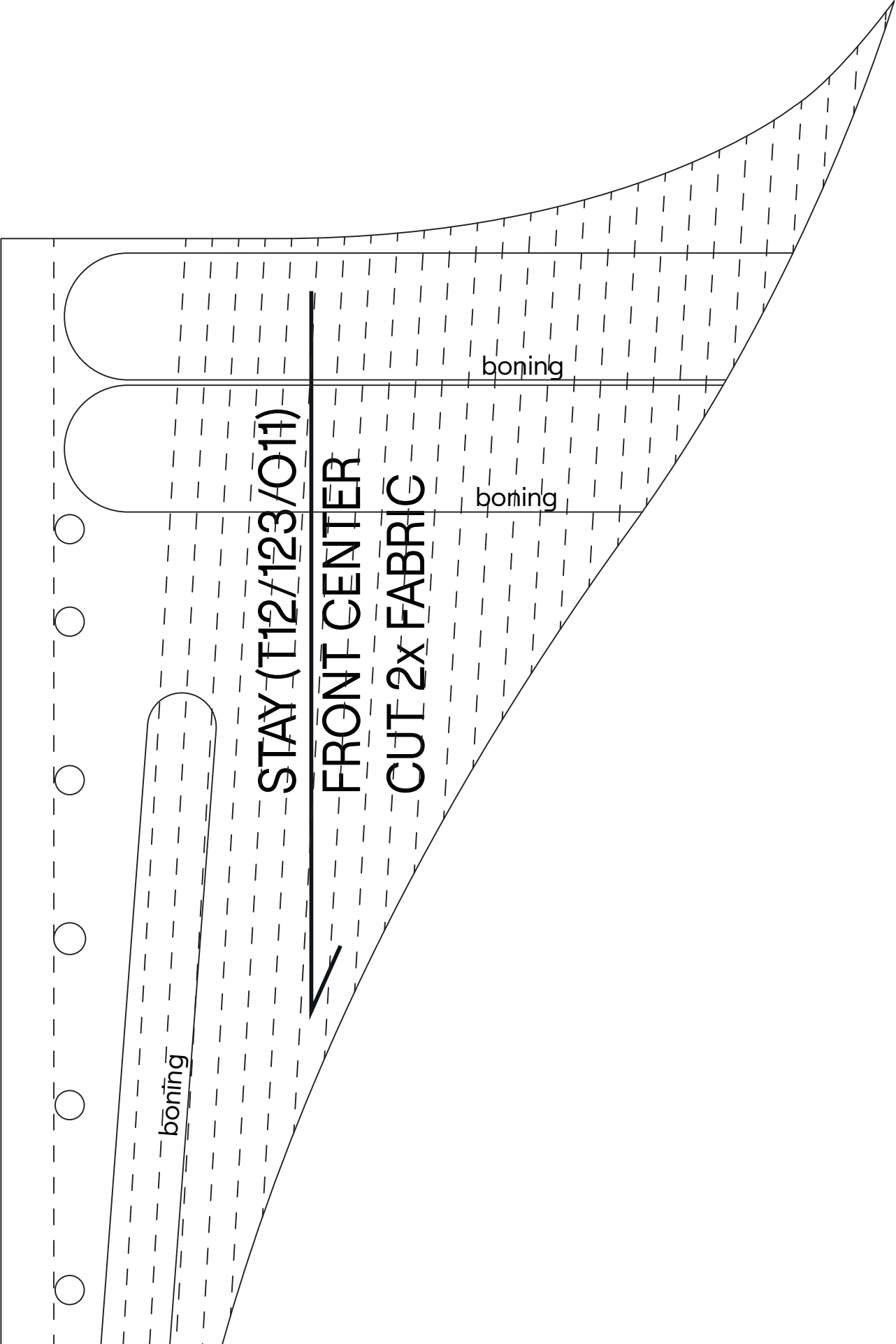
test square
10 x 10 cm

test square
3 x 3 inch

Legend:

grainline





STAY (T12/123/O11)

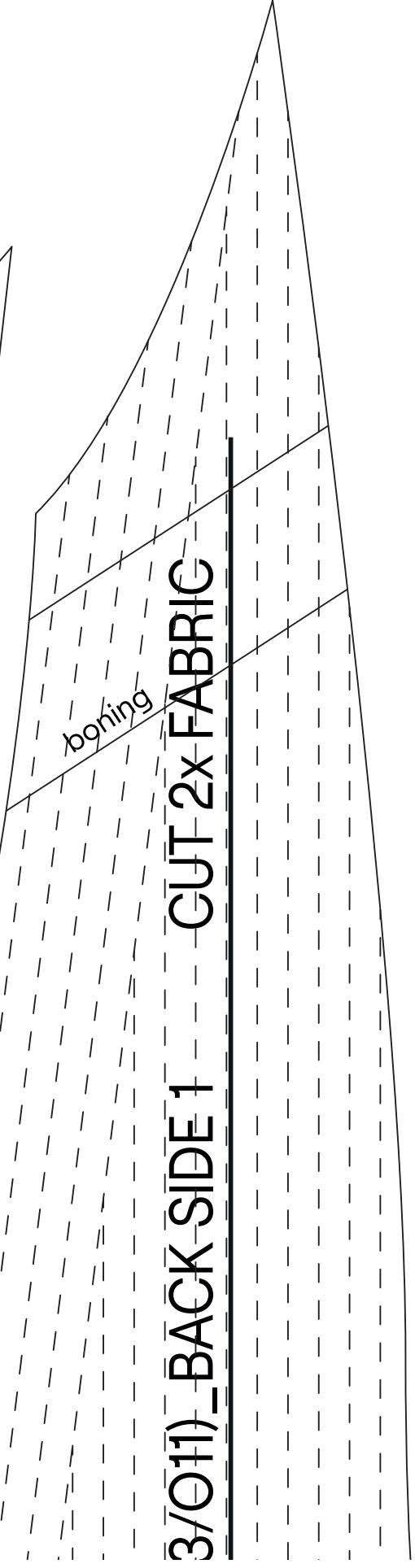
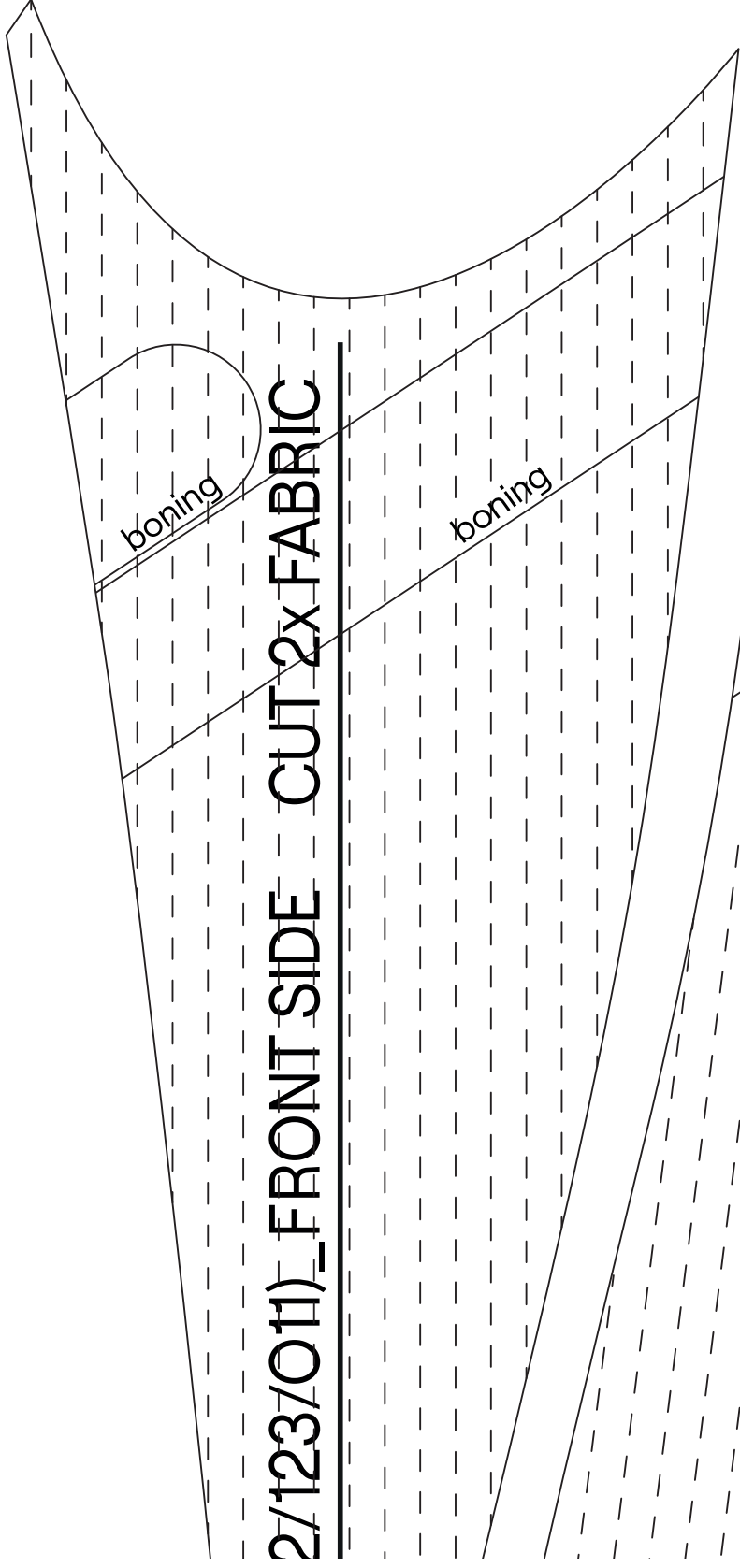
FRONT CENTER

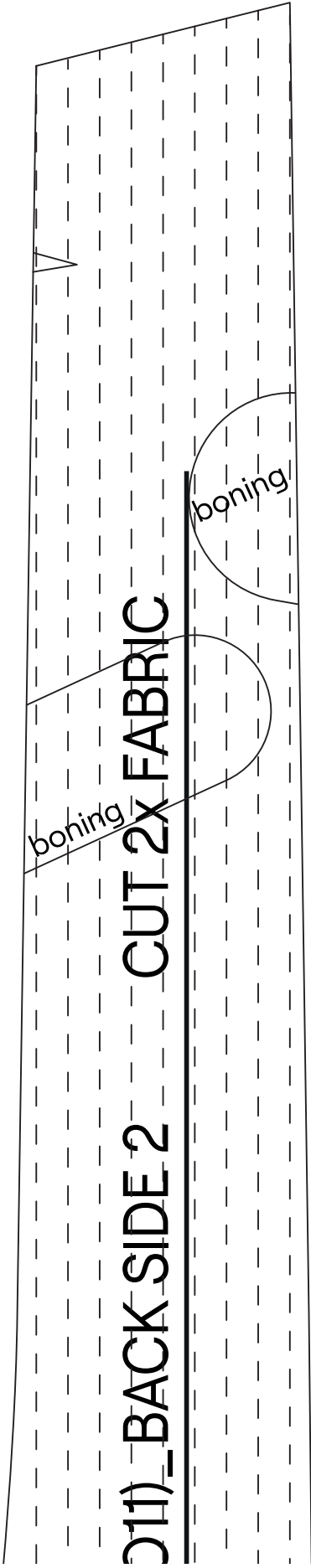
CUT 2x FABRIC

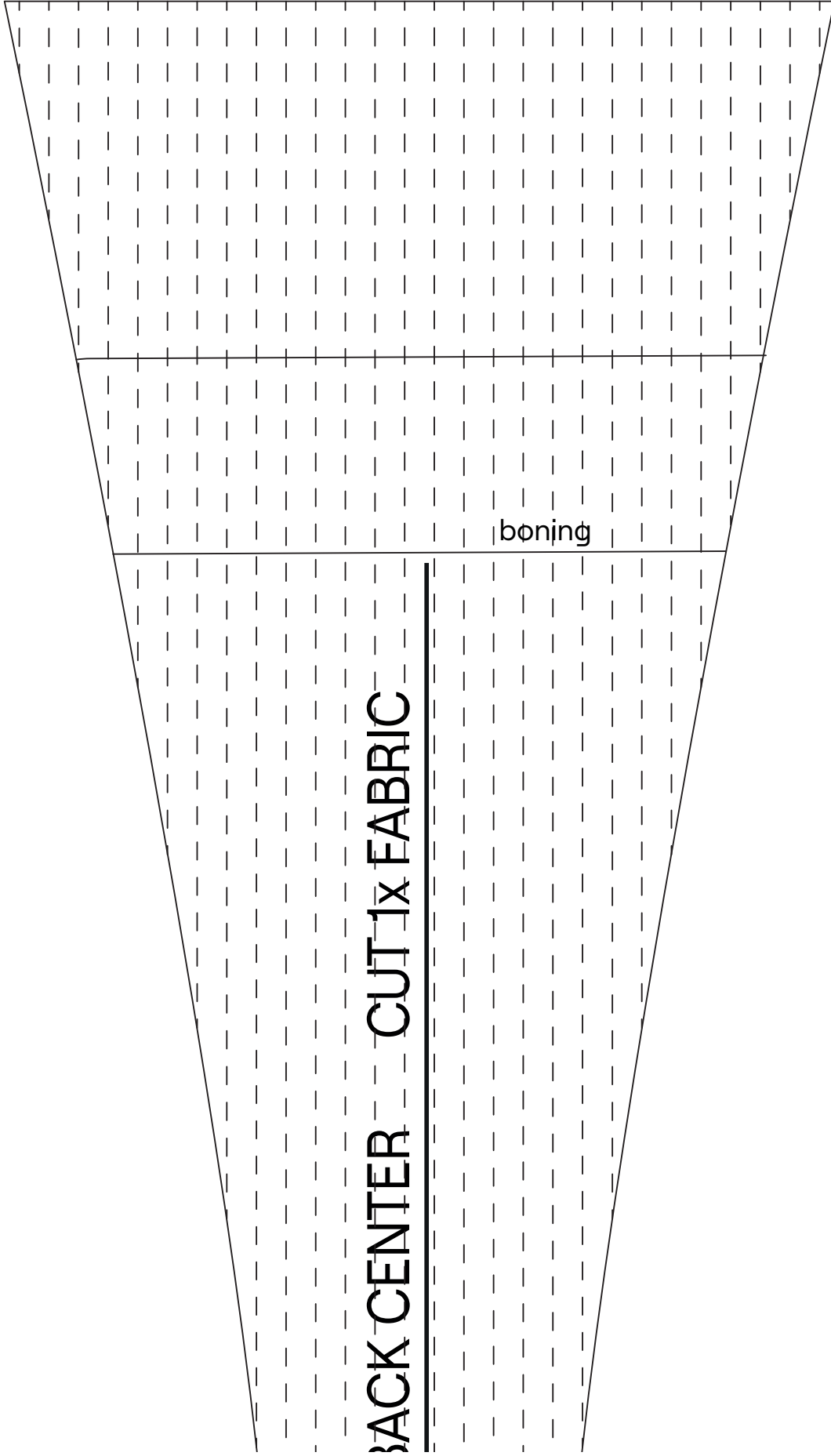
boning

boning

boning







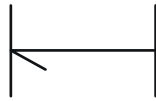
BACK CENTER - CUT 1x FABRIC

boning

notch



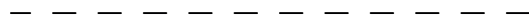
pleat + direction



button / hook and eye



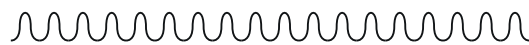
topstitching / embellishment



fold line



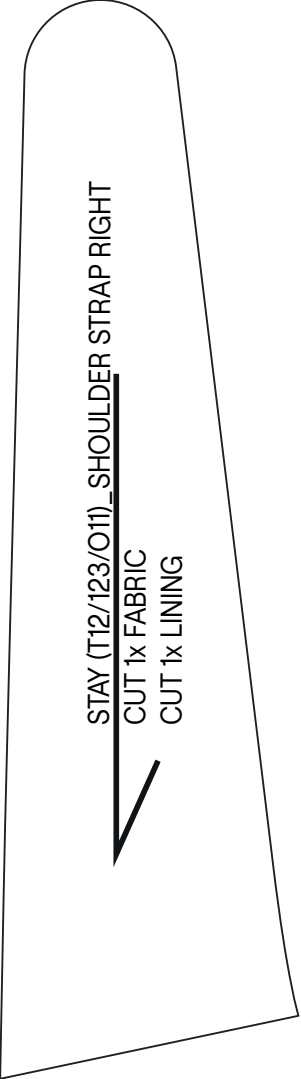
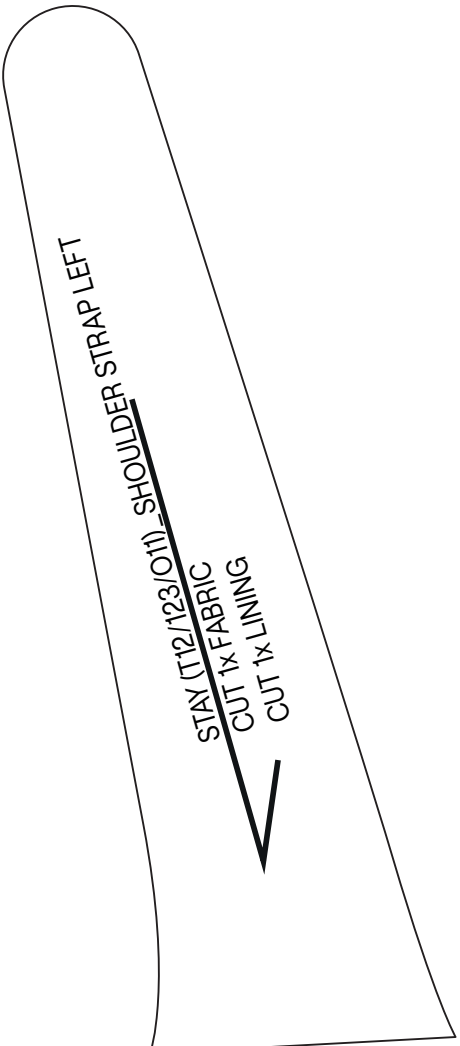
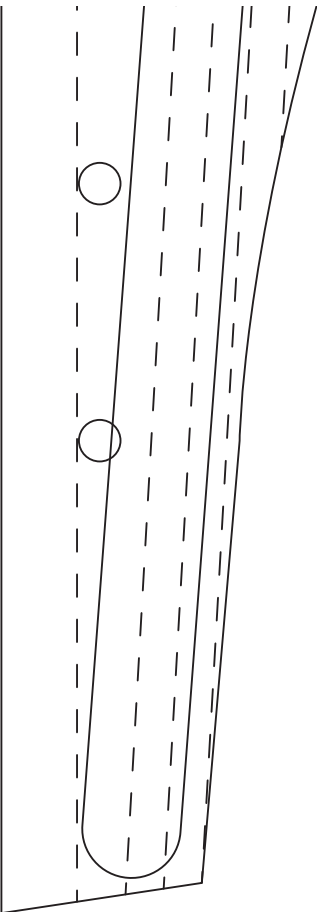
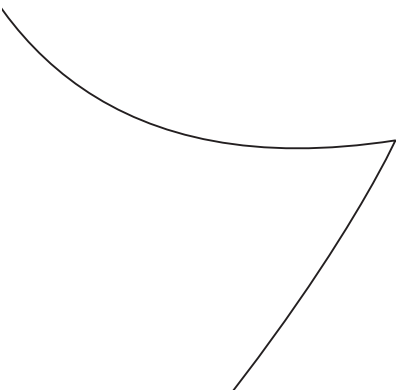
gathering

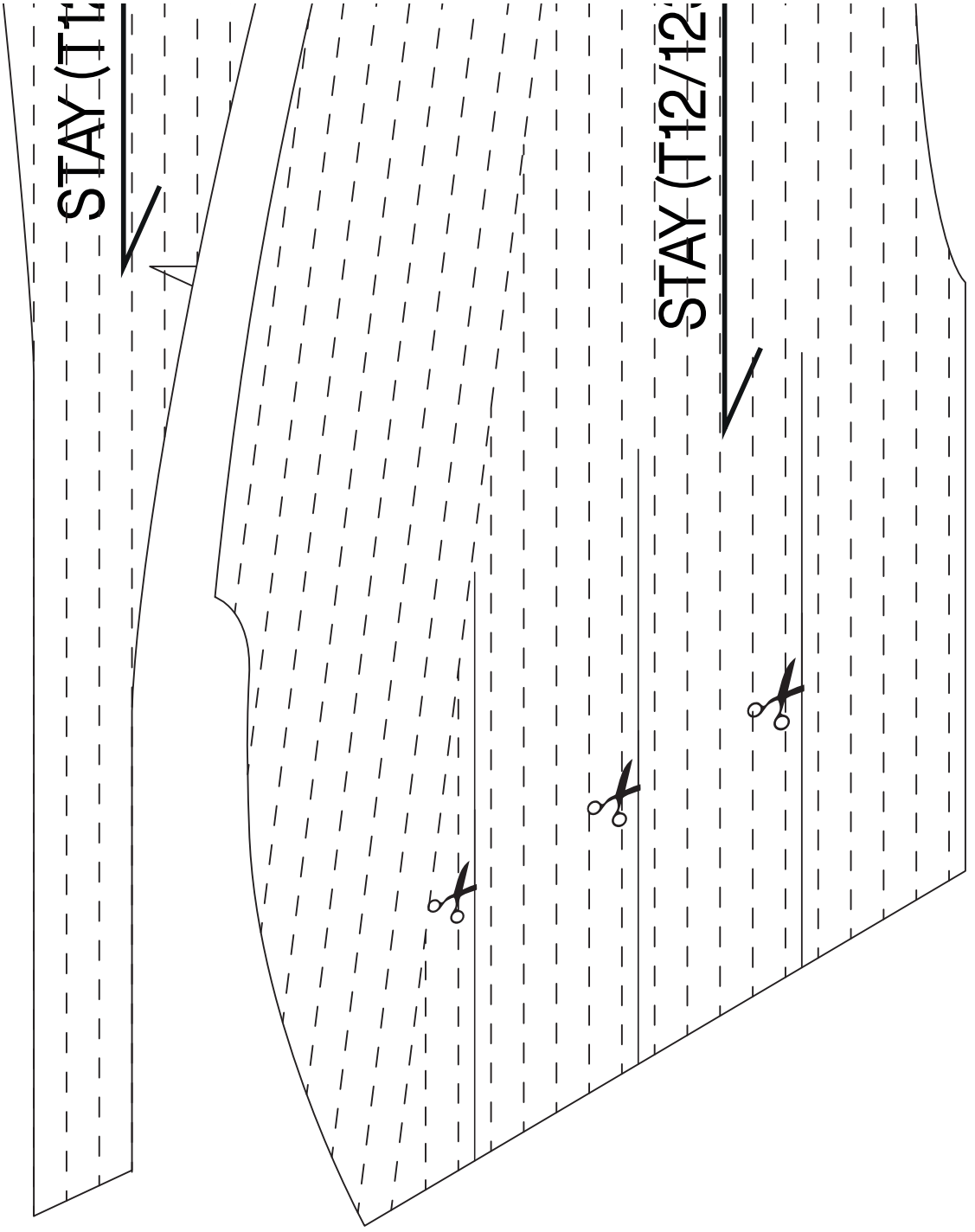


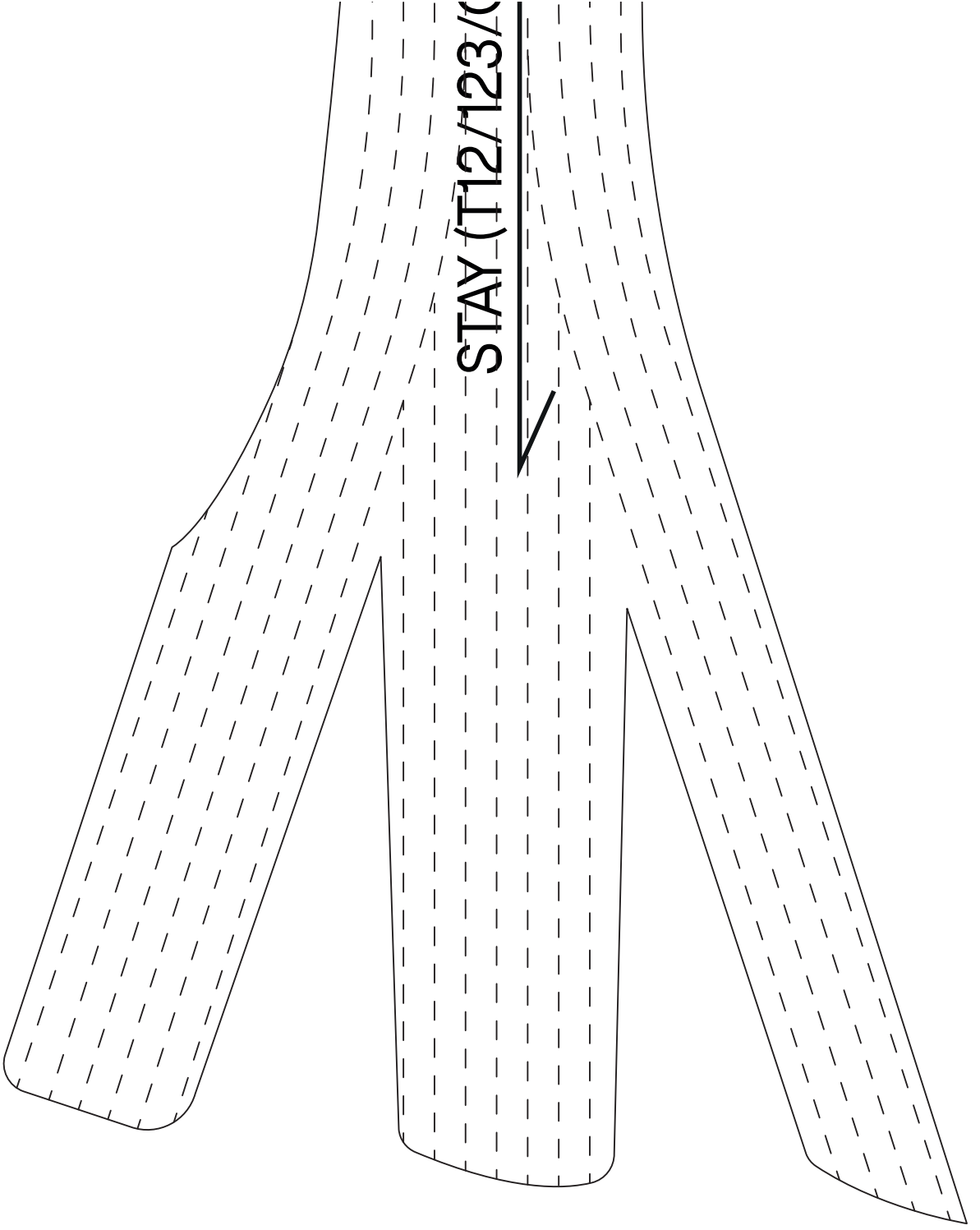
Measurements:

front length	33 cm
back length	46 cm
chest (circumference)	77 cm
waist (circumference)	58 cm

INING

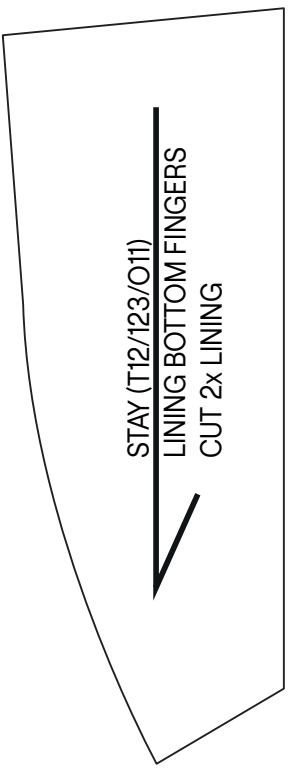
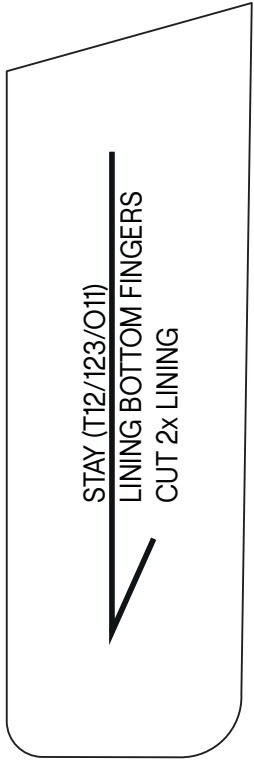
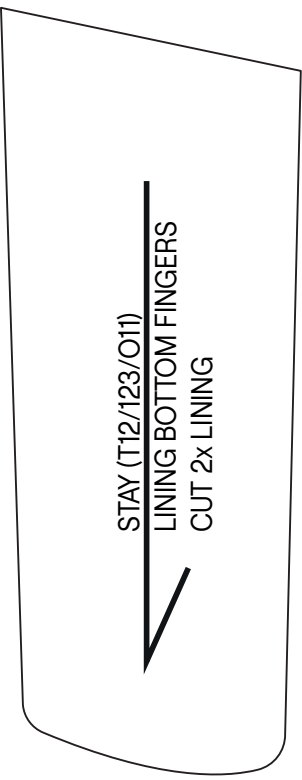
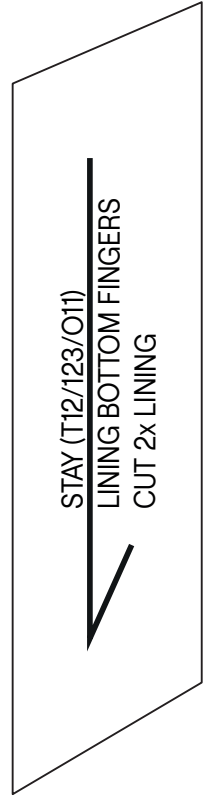


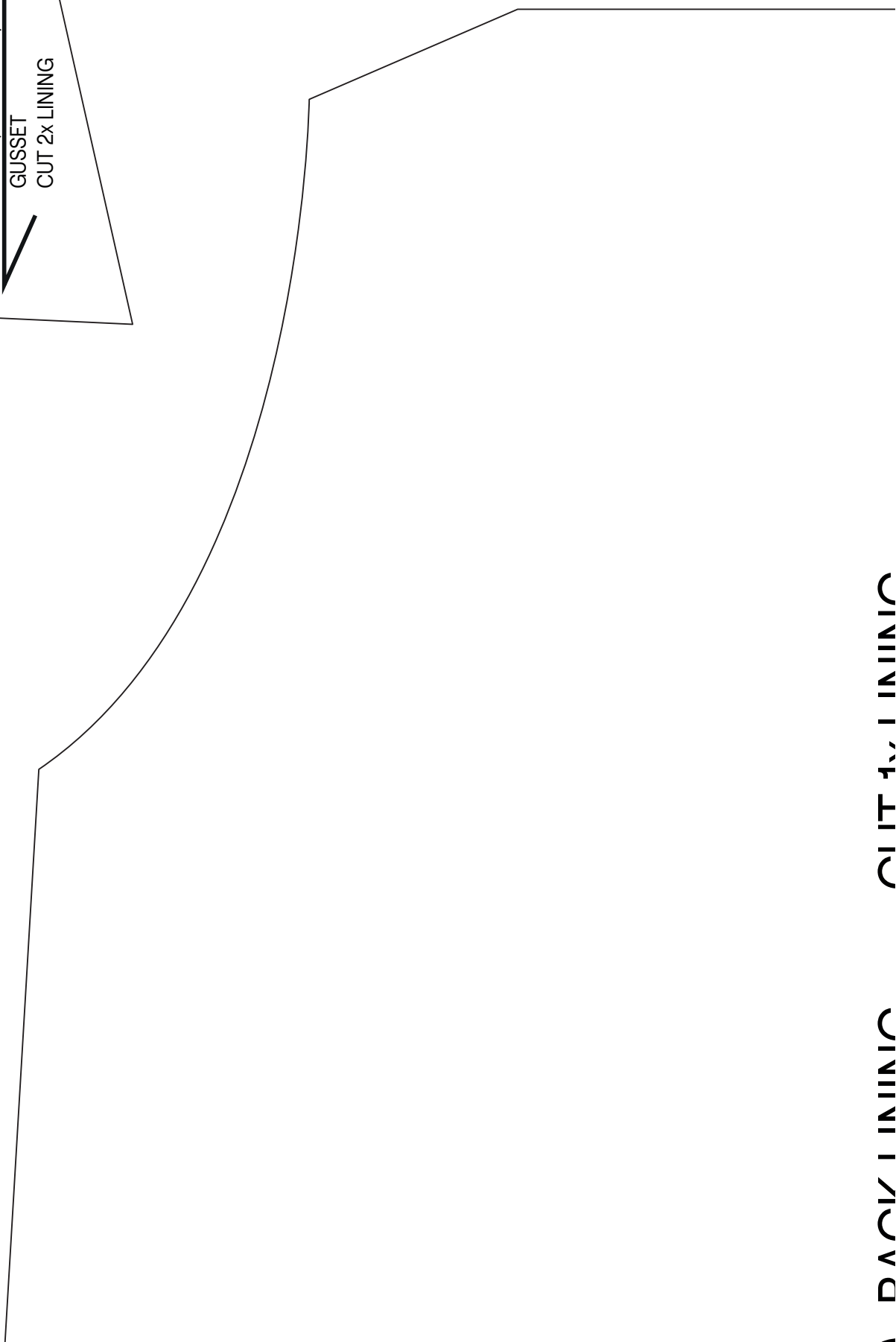
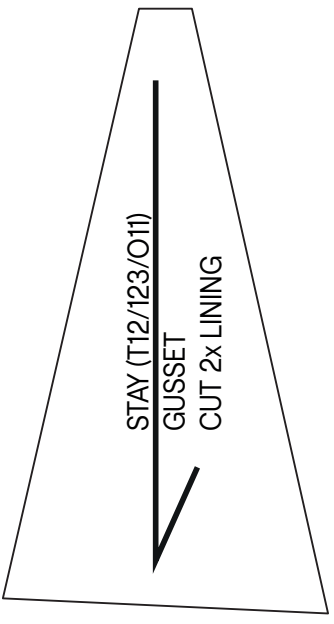




STAY (T12/123/O11) E





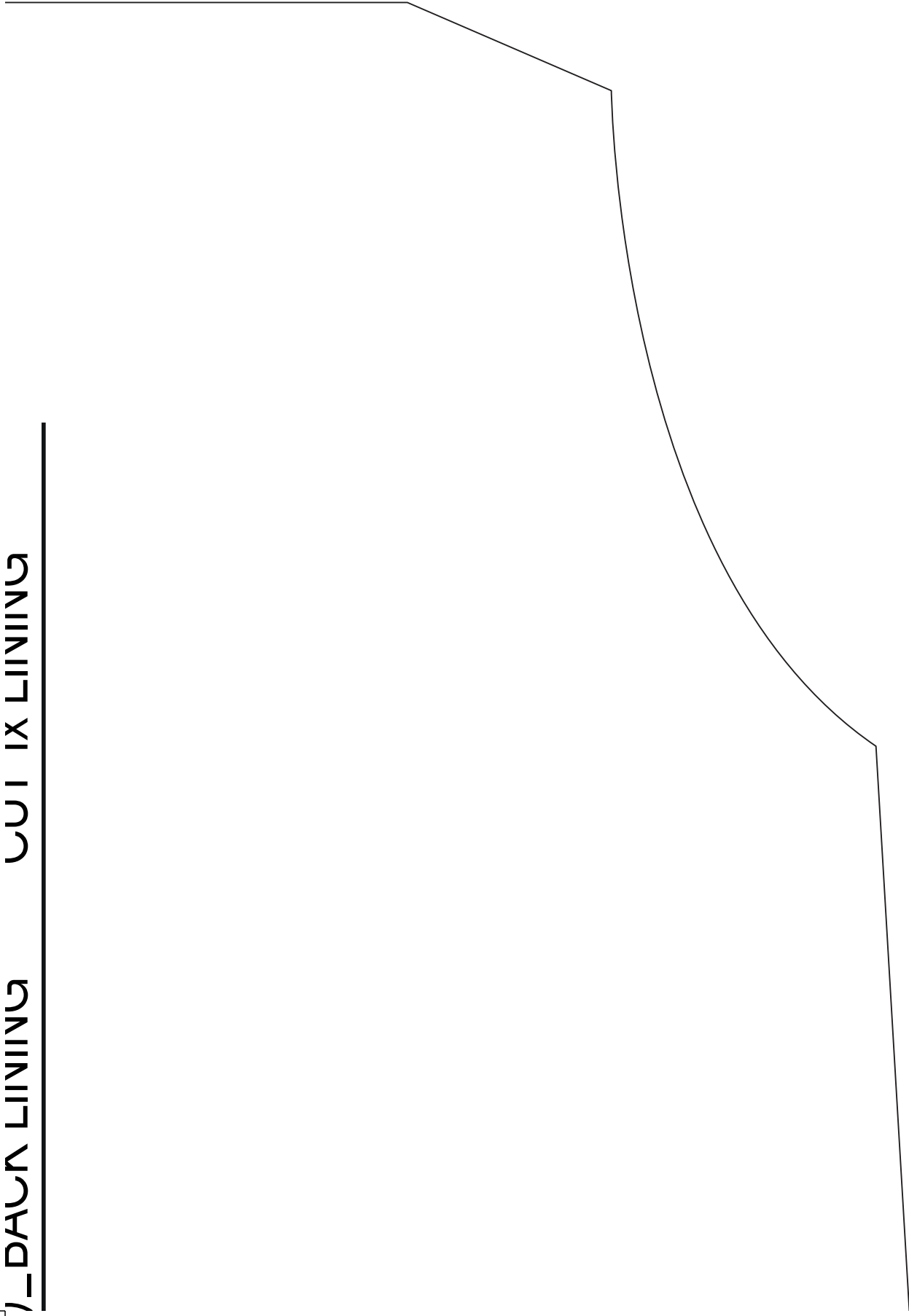


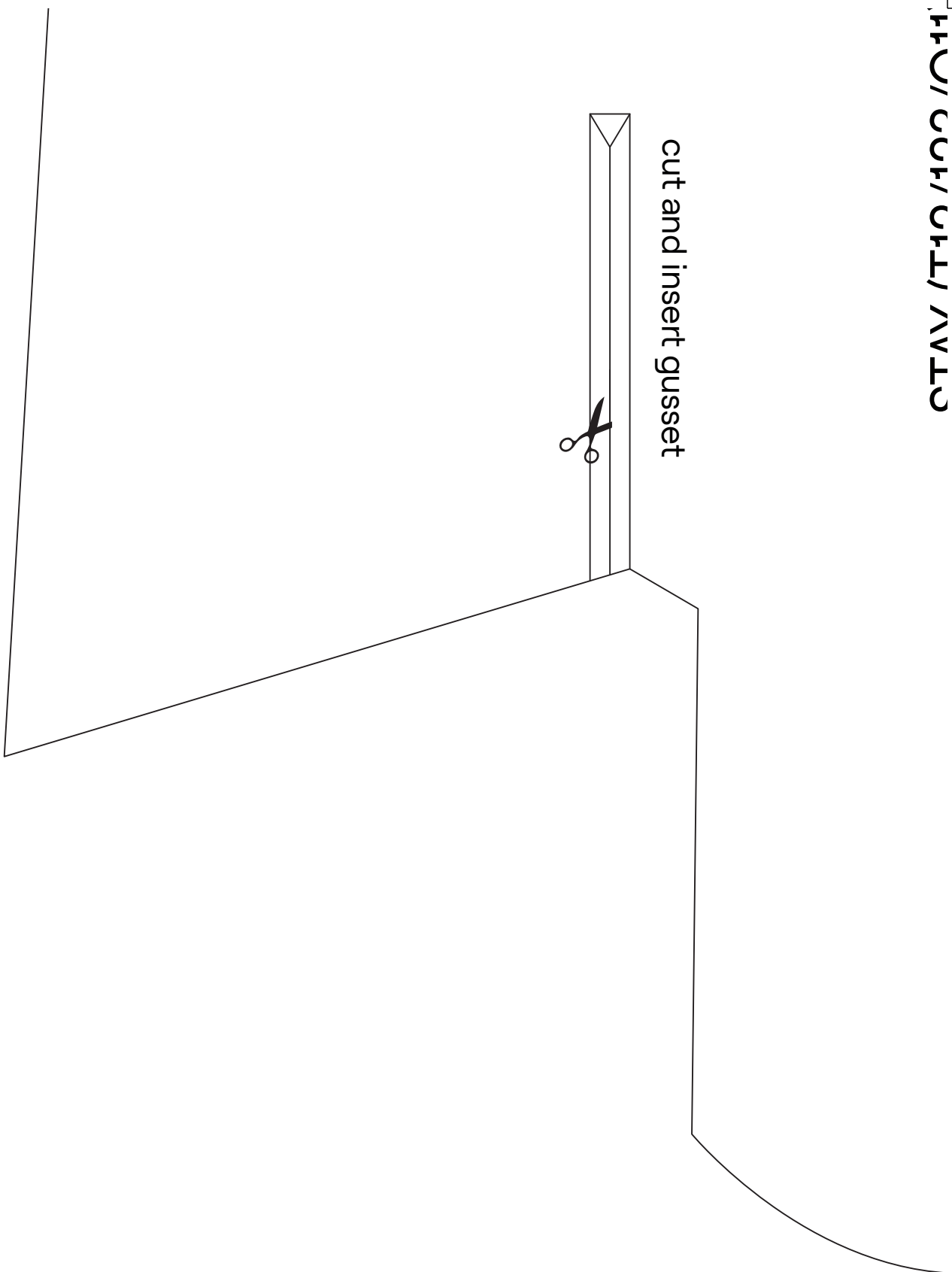
CUT 4x LINING

BACK LINING

1-DALU LINING

1-DALU LINING





cut and insert gusset



